



华南理工大学

South China University of Technology

中国 广州

2021

PROSPECTUS

SCUT

来华留学招生简章

CHASE  
YOUR DREAM







# STUDY IN GUANGZHOU

PURSUIING YOUR STUDY IN GUANGZHOU OFFERS MORE THAN ACADEMIC ACHIEVEMENT IT OFFERS A RICH LIFESTYLE FILLED WITH MULTI-CULTURAL EXPERIENCES

Guangzhou, the capital of Guangdong Province, awarded “International Garden City” by the United Nations, is the bustling regional hub of Southern China. The Pearl River provides easy access to the nearby South China Sea, and it is conveniently located near both Hong Kong and Macao. Superior geographical location, vital transportation and communication facilities make Guangzhou China's Southern Gateway to the world.

Guangzhou cherishes its venerable 2, 200-year history and highly developed culture. Vigorous economic development has enabled her to create unique architecture, a convenient metro system, excellent intercity transportation, a state-of-the-art international airport, and advanced exhibition centers. These contribute to the redefinition of Guangzhou as a fascinating, international metropolis.

Today, Guangzhou ranks among the top three most economically dynamic and flourishing cities in China, exerting influence on China, Southeast Asia, and the world. More than 100 of the top Fortune global 500 corporations have bases in Guangzhou. The city has successfully hosted the China Import and Export Fair over 100 times since 1957, and it has become

a world trade showcase for all of China. At present, the daily international population in Guangzhou ranges from 80,000 to 120,000 and more than 23, 000 international students studying in Guangdong Province. The 16th Asian Games were held in Guangzhou in 2010. In 2015, Guangzhou Evergrande football team won the AFC Championship. Guangzhou was the host city of the 2017 Fortune Global Forum.

Guangzhou is home to over twelve million people from across China and around the world, bringing rich cultural, ethnic, and religious diversity. It is the center and birthplace of Lingnan culture, which extends through Guangdong province and across southeastern China, Hong Kong, Macao and into major Chinese communities all over the world. This vibrant cosmopolitan city boasts cinemas, theaters, museums, art galleries, restaurants, cafes, and abundant nightlife, Cantonese cuisine, especially dim sum, is one of the most famous and delicious Chinese Gourmet. Pursuing your education in Guangzhou offers more than academic achievement; it offers a rich lifestyle filled with multi-cultural experiences!

The city enjoys a sub-tropical climate with plentiful rainfall year-round. Average annual temperature is between 20 and 22 degrees Celsius. Abundant flowers thrive in this favorable climate giving it the nickname "City of Flowers". Guangzhou also boasts one of the largest botanical gardens in the world.





广  
CANTON  
州



# CONTENTS



## 01 SCHOOL INTRODUCTION

STUDY IN GUANGZHOU .....	01
IN THE EYES OF INTERNATIONAL STUDENTS .....	05
INTRODUCTION TO SOUTH CHINA UNIVERSITY OF TECHNOLOGY .....	10



## 02 DEGREE PROGRAMS

UNDERGRADUATE PROGRAMS .....	11
BACHELOR OF ARTS IN TEACHING CHINESE TO SPEAKERS OF OTHER LANGUAGE .....	19
MASTER PROGRAMS .....	21
Ph.D PROGRAMS .....	25



## 05 SCHOLARSHIP

CHINESE GOVERNMENT SCHOLARSHIP FOR POSTGRADUATE STUDENTS .....	51
GUANGDONG PROVINCIAL GOVERNMENT OUTSTANDING INTERNATIONAL STUDENT SCHOLARSHIP .....	54
INTERNATIONAL CHINESE LANGUAGE TEACHERS SCHOLARSHIP .....	55
SCUT INTERNATIONAL SCHOLARSHIP FOR EXCELLENCE .....	57



## 06 FEES FOR STUDYING AT SCUT







P29

### 03 ENGLISH-MEDIUM PROGRAMS

UNDERGRADUATE PROGRAMS .....	30
MASTER PROGRAMS .....	37
Ph.D PROGRAMS .....	45



P47

### 04 NON-DEGREE PROGRAMS

INTERNATIONAL FOUNDATION PROGRAM (Chinese or English Medium) .....	47
GENERAL CHINESE PROGRAM .....	48
INTENSIVE CHINESE PROGRAM .....	49
INTERNATIONAL SUMMER CAMP PROGRAM WITH CREDITS .....	50



P60

### 07 UNIVERSITY FACILITIES



P61

### 08 APPLICATION PROCEDURE





# IN THE EYES OF INTERNATIONAL STUDENTS



**ANJUM ABDUL WAQAS**

- 巴基斯坦，博士研究生
- 化学工程
- 华南理工大学优秀国际学生奖学金、广东省政府来粤留学生奖学金获得者
- Pakistan, PhD student
- Chemical Engineering
- Winner of SCUT International Scholarship for Excellence
- Winner of Guangdong Provincial Government Outstanding International Student Scholarship

Whenever I came across the word “China”, the first two things that came to my mind were “Long live Pak-China friendship” and “Get knowledge even if you have to go to China”. To fulfill this dream of seeking knowledge, when I first came to China in 2015, little did I know that it would become my second home. The love, affection, and hospitality I received from Chinese friends are beyond words. After living in China for five years, I can proudly say that it is one of the best things in my life that I got admission in South China University of Technology. If you have a passion for moving forward and doing something in life, then the South China University of Technology is a great choice because it is one of the best institutions in China as well as located in a city where there are countless opportunities to grow and fulfill your dreams, and in the presence of highly qualified professors, all the facilities are available that are necessary for topnotch research.



**SAKAGUCHI YU**

- 日本，硕士研究生
- 企业管理
- 中国政府奖学金获得者
- Japan, Master's Student
- Business Administration
- Winner of Chinese Government Scholarship

広州といえば「食は広州にあり」というフレーズが有名ですが、実は中国においては千年商都としてもよく知られています。今日においても非常に開放的で包容力の高い、まさに質実剛健という言葉がピッタリの都市です。そんな広州に位置する華南理工大学は広東省を代表する理系大学の一つで、「エンジニアのゆりかご」や「企業家のゆりかご」として知られています。私が所属している工商管理学院企業管理学科も例外なく「広州マインド」に溢れており、数多くの民間企業の実業家たちを輩出している名門校として知られています。

日中両国の民間企業の経営戦略や組織運営のあり方を研究している私にとって、広州の商都としての素質や立地的な優位性と華南理工大学が民間の実業家として活躍する卒業生の実績や知見を前面に押し出していく姿勢に大変魅力を感じ、修士学生としての入学を決めました。また、現在では政府が推進している大湾区計画により、広州での日常生活もより便利で快適なものになっています。学内においても教授や講演会の登壇者が深センや珠海などの近隣都市から直接大学に駆けつけるのは恒常的な風景となっており、今では留学生が週末を利用して香港やマカオまで向くのも非常に簡単になりました。都市圏が単独で存在していることが多い中国において、近隣に大都市が存在する上に簡単に往来ができるのも広州ならではの利点だと思います。

食とチャンスに恵まれた街、広州の華南理工大学でお待ちしております！



# IN THE EYES OF INTERNATIONAL STUDENTS



**KARI OMAR**

- 叙利亚，本科生
- 土木工程（英文授课）
- Syria, Undergraduate Student
- Civil Engineering(English Medium)

I have lived in China for the past 12 years, I heard a lot about SCUT from a very young age. SCUT delivers very advanced teachings which caught my attention. The time I spent in SCUT so far has shown me how incredibly nice and helpful the teachers and students are. Though the research I have done about SCUT I have found out that it has one of the best engineering courses in Guangdong. Therefore I selected SCUT to further my education because I believe it can help me fulfill my potential by unleashing the love of engineering in me.



**FAUSTINUS EDBERT YULIUS**

- 印度尼西亚，本科生
- 计算机科学与技术（英文授课）
- 华南理工大学优秀国际学生奖学金（一等奖）、广东省政府来粤留学生奖学金获得者
- 留学生联谊会主席
- Indonesia, Undergraduate Student
- Computer Science and Technology (English Medium)
- Winner of SCUT International Scholarship For Excellence (First Class Honor)
- Winner of Guangdong Provincial Government Outstanding International Student Scholarship
- President of International Students Union

SCUT is one of the most reputable and highly regarded university in China, a reputation that they definitely live up to. One of the things that SCUT excels at is that they provide education both inside and outside of the classroom with the help of the ISU. The International Student Union (ISU) provides various events, lectures, and assistance and has given me a learning experience that I couldn't find anywhere else. This came in the form of events such as Culture Festival, visits to teach in a school for hearing impaired students, lectures from professionals, Halloween & Welcoming Party, and sports events among other things. This principle of providing learning experience and assistance has stayed consistent throughout the years even through the pandemic. If you plan to come to SCUT, know that some of the best years of your life are waiting to shape you into a great person here in SCUT.





SULTANMURATOV KADAMBOY

- 乌兹别克斯坦，本科生
- 计算机科学与技术（英文授课）
- 华南理工大学优秀国际学生奖学金（二等奖）、广东省政府来粤留学生奖学金获得者
- Uzbekistan, Undergraduate Student
- Computer Science and Technology (English Medium)
- Winner of SCUT International Scholarship For Excellence (Second Class Honor)
- Winner of Guangdong Provincial Government Outstanding International Student Scholarship

Учёба за границей предоставляет студентам большие возможности, но возможность реализовать их можно не во всех университетах. Наш университет идеально подходит для таких целей. Рейтинг университета находится на 250 месте в мире, это не просто цифры в списке, а показатель качества преподавания и уровня знаний студентов.

Я обучаюсь на факультете "Наука компьютера и технологии", обучение проходит на высоком уровне. Имеется доступ ко всем новейшим технологиям, которые мы используем в реальных сценариях. Также в этом универе я пользуюсь услугами библиотеки, в которой можно найти огромное количество нужной учебной информации. На регулярной основе проходят тренинги, выставки новейших технологий и многое другое.

Здесь мы не только получаем знания, но и общаемся с иностранными студентами, знакомимся с их традициями, обычаями и пополняем свой багаж знаниями о культуре людей во всем мире. Жизнь в Гуанчжоу отличная, большой прекрасный город с хорошей атмосферой, жить и обучаться здесь очень приятно. Вы можете убедиться в этом сами, мы ждём вас!



CHEW LER YIN

- 马来西亚，本科生
- 国际经济与贸易（英文授课）
- 华南理工大学优秀国际学生奖学金（一等奖）、广东省政府来粤留学生奖学金获得者
- Malaysia, Undergraduate Student
- International Economics and Trade(English Medium)
- Winner of SCUT International Scholarship For Excellence (First Class Honor)
- Winner of Guangdong Provincial Government Outstanding International Student Scholarship

I've never regretted choosing SCUT as my option to further my studies. SCUT is one of the top achieving universities in China, and they also provide a very good environment for all the students, from the school facilities to the dormitory, everything is decent. Besides, their syllabus offers a wide range of courses and all the knowledge i learnt definitely helps me to build a better future. Teachers and staffs in SCUT have been very welcoming to foreign students and it makes me feel warm, like i am at home. Living abroad alone is not easy at all but the people here make this journey colourful. Furthermore, the events and activities held in SCUT encourages involvement of foreign students. In the International Students' Union, we get to organise and run events which help us create lots of precious memories in our university life. All in all, my journey in SCUT was nothing but genuine contentment. Come join us in SCUT!





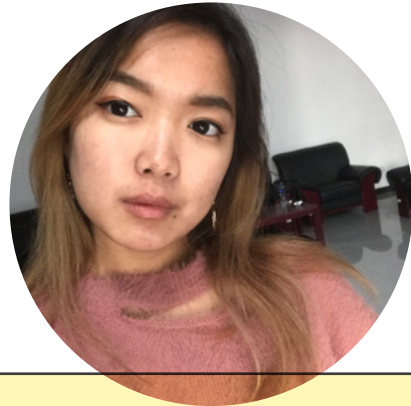
**PRAIKAEW CHANATIP**

- 泰国, 本科生
- 汉语国际教育
- Thailand, Undergraduate Student
- Teaching Chinese to Speakers of Other Language

South China University of Technology (SCUT)

ตั้งอยู่ในมณฑลกว่างตง เป็นสถาบันอุดมศึกษาที่มีชื่อเสียงที่สุดแห่งหนึ่งในประเทศจีน โดยขึ้นตรงกับกระทรวงศึกษาธิการของประเทศจีน ปัจจุบันมหาวิทยาลัยมีสองวิทยาเขตคือ วิทยาเขตอู๋ชานตั้งอยู่ในเมืองกว่างโจวและวิทยาเขตเทียนเหอ SCUT ได้ก่อตั้งมาตั้งแต่ปี ค.ศ.1952 มหาวิทยาลัยได้จัดการศึกษา โดยนําเทคโนโลยีที่ทันสมัยเข้ามาใช้ประกอบการเรียนการสอน รวมทั้งได้ค้นคว้าทฤษฎีและแนวทางการปฏิบัติใหม่ๆ ที่เหมาะสมมาสอดแทรกในวิชาเรียนเพื่อให้นักศึกษาได้รับประโยชน์จากการเรียนอย่างเต็มที่ รวมทั้งสามารถนำความรู้ไปใช้ปฏิบัติได้จริงในชีวิตการทำงาน มหาวิทยาลัยมีความพร้อมของเทคโนโลยีและสื่อการเรียนการสอนที่สมบูรณ์แบบในทุกๆ ด้าน โดยมุ่งเน้นทางด้านวิทยาศาสตร์และเทคโนโลยี สถาปัตยกรรม วิศวกรรมโยธา วิชาออกแบบชุมชนเมือง บริหารธุรกิจ นิติศาสตร์ เกษษศาสตร์बंधจิตและศิลปศาสตร์ เป็นต้น SCUT พยายามจะผลักดันตัวเองให้เป็นมหาวิทยาลัย world class ในกลุ่มมหาวิทยาลัยนานาชาติ ซึ่งมีความคล่องแคล่วในเรื่องของวิชาการ, การส่งเสริมร่วมมือกันของมหาวิทยาลัยนานาชาติมากกว่า 80 แห่ง ปัจจุบันมีนักเรียนมาเรียนมากกว่า 70 ประเทศ ประมาณ 65% ลงเรียนวิชาหลัก ส่วนที่เหลือลงเรียนภาษาจีน

ภาษาจีนเป็นอีกหนึ่งภาษาที่สวยงามและภาษาจีนเป็นภาษาที่สำคัญมากในปัจจุบัน เนื่องจากปัจจุบันประเทศจีนติดต่อค้าขาย, ประกอบธุรกิจกับต่างชาติเป็นจำนวนมากซึ่งประเทศไทยเป็นหนึ่งในประเทศที่ติดต่อกับค้าขายกับประเทศจีนและจำนวนคนจีนที่เข้ามาท่องเที่ยวในประเทศไทยก็เพิ่มมากขึ้นทุกปี ซึ่งเป็นเหตุผลหลักที่เราควรเรียนรู้ภาษาจีนพื้นฐานและจะเป็นผลดีมากหากเราสามารถสื่อสารได้ หากเปรียบภาษาจีนกับภาษาอังกฤษแล้วละก็ สองภาษาที่สำคัญไม่ต่างกันเลยทีเดียว นี่เป็นเหตุที่ทำให้ฉันอยากศึกษาต่อระดับมหาวิทยาลัยในประเทศจีน ซึ่งแน่นอนว่า SCUT สามารถตอบโจทย์ของฉันได้ SCUT หรือมีชื่อภาษาจีนที่ว่า “华南理工大学” เป็นมหาวิทยาลัยที่มีชื่อเสียงมากในมณฑลกว่างโจว เป็นมหาวิทยาลัยที่สวยงาม ชาวสาวงามมีดีไม่น้อยทุกพื้นที่ของมหาวิทยาลัย สงบ ร่มเย็น อากาศบริสุทธิ์มากๆ ทั้งพื้นที่ของมหาวิทยาลัยกว้างมาก ทางมหาวิทยาลัยจะแบ่งการเรียนเป็นของเด็กต่างชาติ เด็กจีน ไว้อย่างชัดเจน เราจะไม่ได้เรียนร่วมกับคนจีน และในส่วนของหอในบอกได้เลยว่าหอของมหาวิทยาลัยนี้ดีที่สุดในแล้ว สะดวกสบายอยู่รวมกันกับเพื่อนๆ ได้จริงๆ จะไม่พูดถึงไม่ได้เลยคืออาหาร อาหารที่นั่นไม่ต่างจากประเทศไทยมากนักเพราะกว่างโจวเป็นเมืองที่ติดกับประเทศไทยดังนั้นจึงมีรสชาติอาหารที่ใกล้เคียงกัน ในส่วนการเรียนการสอนไม่ต้องพูดถึง SCUT เป็นมหาวิทยาลัยชั้นนำอยู่แล้ว เพราะฉะนั้นทางมหาวิทยาลัยมีเทคโนโลยีทันสมัยและมีสิ่งอำนวยความสะดวกมากมายให้กับนักศึกษาทุกคน สุดท้าย ทางมหาวิทยาลัยยังมีทุนการศึกษามากมายให้ทุกคนสามารถสมัครสอบและยื่นขอทุนได้ด้วยตัวเองอีกด้วย ครอบคลุมได้ความรู้ในทีเดียว "South China University of Technology (SCUT)"



**RADNAEVA ELENA**

- 俄罗斯联邦, 汉语进修生
- 普通汉语
- 孔子学院奖学金获得者
- Russia, Chinese language student
- General Chinese
- Winner of Confucius Institute Scholarship

Всем привет, меня зовут Елена, а родом я из Бурятии. Два года назад я приехала в Китай и очень удивилась развитостью государства. Люди очень открытые, дружелюбные и милые, и когда видят, что ты иностранец, то обязательно помогают. Именно это вдохновило меня на путешествия по другим городам Китая. Побывав в 6 городах Китая, у меня появилась маленькая мечта – пожить и поучиться в Гуанчжоу, ибо этот город существенно отличается от остальных. И недавно моя мечта осуществилась – я поступила в один из лучших университетов Китая - 华南理工大学.

Мне очень нравится здесь учиться. Хороший преподавательский состав, высококвалифицированные учителя, профессионализм и внимательное отношение к студентам делают образование действительно качественным. Сейчас я прохожу годовые языковые курсы, а дальше планирую поступать на магистратуру в этом же университете. Учиться в Китае – дело не из легких, но поверьте все получится, если упорно трудиться.



**Top 1%**

Material Science,  
Chemistry, Engineering, Agriculture Science,  
Physics, Biology, Computer Science, Environmental  
Ecology and Clinical Medicine.

**Top 1%**

Engineering, Material Chemistry, Chemistry and  
Agricultural Science

**213**

Key Laboratories of provincial and national level

**Top 17**

among the universities in mainland China

**Top 22**

Global academic ranking in the discipline of  
engineering

**15**

Academies in Members of the Chinese Academy  
of Science (CAS) or the Chinese Academy of  
Engineering (CAE)

**Top 10 subjects**

7 subjects, including Light Industrial Technology  
and Engineering, Food Science and Engineering,  
Urban and Rural Planning, Material Science  
and Engineering, Architecture, and Chemical  
Engineering and Technology, are ranked in the top  
10 among Chinese universities.

**99.71%**

The employment rate of postgraduates, Top3 in  
Chinese Universities

**2000+**

International students

**7270000**

Collection volume of the university library

**151-200<sup>th</sup>**

2020 Academic Ranking of World Universities  
(ARWU)

**Top 2**

Chinese universities for science and technology  
innovation



# INTRODUCTION TO SOUTH CHINA UNIVERSITY OF TECHNOLOGY

South China University of Technology (SCUT) is one of China's leading universities directly under the Ministry of Education, and one of the national 211 and 985 project universities, which qualifies it as a prestigious and highly sought-after institution in China. Since its establishment in 1952, SCUT has developed into a major comprehensive university with prestigious disciplines in science and engineering as well as offerings in business, management, liberal arts, law and art design, etc. SCUT ranks among the top 200 in the World University Rankings 2020, and this year has also seen a dramatic progress of SCUT ranking in USNEWS, where SCUT is at the 16th spot in mainland China. SCUT comprises 34 colleges, which possess 31 first-class disciplines authorized for doctorates, 39 first-class disciplines authorized for master's degree. The university has varieties of top-notch disciplines in the world. In the global ESI ranking, 9 disciplines are ranked in the top 1%, and 4 in the top 1 millesimal, which are Engineering, Material Chemistry, Chemistry and Agricultural Science. Seven disciplines, including Light Industrial Technology and Engineering, Food Science and Engineering, Urban and Rural Planning, Material Science and Engineering, Architecture, and Chemical Engineering and Technology, are ranked in the top 10 among Chinese universities. SCUT has developed its presence in the world considerably, and has played a more and more essential role in the development of global higher education.

SCUT strives to be an exceptional example for the entire international university community. It is active in academic exchange and has forged vital relationships with more than 200 overseas universities, including Cambridge University and Harvard University. In addition, SCUT has co-constructed 3 Confucius Institutes, respectively with Lancaster University in the UK, University of Idaho in the US and Audi AG, the municipal government of Ingolstadt and Technische Hochschule Ingolstadt (THI) in Germany. In 2019, SCUT had about 2500 international students from 130 countries. The international profile of SCUT has been raised remarkably, and our capacity for excellence and global reach has been enhanced substantially.

SCUT is located in bustling, modern Guangzhou, close to both Hong Kong and Macau. It has three vibrant campuses: the Wushan campus, the University Town campus, and the Guangzhou International campus.

The Wushan campus is in the beautiful Tianhe District. It is an attractive area with rolling hills, lakes, lush greenery, and lovely flowers. This campus has a mixture atmosphere of both attractive traditional architectures and appealing modern buildings. The University Town campus is in the University Town of Panyu District. It has an open and spacious environment filled with beautiful landscaping and innovative and modern architecture. The newly built International campus locates in the core area of the south coast of Panyu District, facing the shore of University Town. It is a national-level campus and one of the key construction projects of Guangdong-Hong Kong-Macao Greater Bay Area (GBA).

SCUT also provides an exciting and welcoming campus where you can adapt to the new environment promptly. You will not only stretch yourself academically, but also deepen your understanding on many other aspects. Your international perspectives will be broadened, your points of view will be refreshed during your study journey. Meanwhile, our campus is buzzing with activities which will provide you fascinating opportunities to enhance your abilities and gain a skill set useful to your career. Our graduates are in great demand. Your experience here will definitely broaden the range of career prospects open to you and single you out wherever you choose to shine.

Inspired by the university motto of "Study Extensively, Reflect Carefully, Discriminate Clearly, Practice Earnestly", we believe that SCUT will have more students who can create their places in the world and will be the institute that defines the university of tomorrow!



# DEGREE PROGRAMS



## UNDERGRADUATE PROGRAMS

**(4 Years, Architecture Related Majors: 5 Years)**

SCUT enrolls international students into Chinese medium undergraduate programs by divisions from most divisions will undergo the general curriculum of their divisions in their first academic year. By the end of

the first academic year, the specific programs/ majors will be confirmed by their performance ranking. In the second year, students enter the relevant schools for major study.



# WUSHAN CAMPUS

Schools	Divisions	Programs/ Majors	Core Curriculum
School of Mechanical and Automotive Engineering	Mechanical Engineering	Mechanical Engineering	Engineering Thermodynamics, Mechanical Principles, Mechanical Design, Fundamentals of Mechanical Manufacturing, Engineering Mechanics, Fundamentals of Mechanical Designing, Fluid Mechanics and Heat, Transfer, Automatic Control Theory
		Mechatronic Engineering	
		Vehicle Engineering	
		Process Equipment and Control Engineering	
		Materials Molding and Control Engineering	
School of Architecture	Architecture	Architecture	Architectural Design, Principles of Architectural Design, Fundamentals of Architectural Design, Fine Arts, History of Chinese Architecture, History of Western Architecture, Computer-Aided Design
	Urban and Rural Planning	Urban and Rural Planning	
	Landscape Architecture	Landscape Architecture	
School of Civil Engineering and Transportation	Civil Engineering	Civil Engineering	Theoretical Mechanics, Fluid Mechanics, Civil Engineering Construction, Project Management in Civil Engineering, Transport Planning, Engineering Hydrology
		Water Engineering	
		Shipbuilding and Oceanography Engineering	
		Construction Management	
	Transportation	Traffic Engineering	
		Transportation	
Civil Engineering (Bilingual: Need to Take the Entrance Examination)	Civil Engineering (Bilingual: Need to Take the Entrance Examination)		
School of Electric Power	Electric Specialty	Electrical Engineering and Automation	Engineering Thermodynamics, Heat Transfer Theory, Principles of Turbine, Fundamentals of Mechanical Designing, Circuit, Visual Basic Program Design
		Energy and Power Engineering	
		Nuclear Engineering and Technology	
School of Electronic and Information Engineering	Information Engineering	Information Engineering	Circuit, Analog Electronic Technology, Digital Electronic Technology, Signal and System, Microcomputer System and Interface, Digital Signal Processing, Telecommunication Circuit, Fundamentals of Information Theory
School of Automation Science and Engineering	Automation Engineering	Automation	Analog Electronic Technology, Digital Electronic Technology, Power Electronic Technology, Introduction to Intelligent Control, Computer Network and Telecommunication
		Intelligence Science and Technology	

Schools	Divisions	Programs/ Majors	Core Curriculum
School of Materials Science and Engineering	Materials Engineering	Polymer Materials and Engineering	Introduction to Materials Science and Engineering, Fundamentals of Materials Science, Solid Physics, Thin Film Physics and Technology, Optoelectronic Materials and Devices
		Materials Science and Engineering	
		Functional Materials	
	Materials Engineering (English Medium: Need to Take the Entrance Examination)	Materials Engineering (English Medium: Need to Take the Entrance Examination)	
School of Chemistry and Chemical Engineering	Chemical Engineering and Pharmaceutics	Applied Chemistry	Physical Chemistry, Organic Chemistry, Inorganic Chemistry, Organic Chemistry Experiment, Biological Chemistry, Chemical Reaction Engineering, Chemical Engineering thermodynamics, Chemical Engineering Design, Automatic Control Technology and Theory, Petroleum Processing
		Chemical Engineering and Technology	
		Energy Chemistry Engineering	
		Pharmaceutical Engineering	
School of Food Science and Engineering	Food Science and Engineering	Food Science and Engineering	Food Analysis, Principals of Food Processing and Storage, Food Chemistry
		Food Quality and Safety	
School of Light Industry and Engineering	Light Industry	Light Chemistry Engineering	Principles of Chemical Engineering, Organic Chemistry, Microbiology
		Resources and Environment Science	
School of Mathematics	Mathematics	Mathematics and Applied Mathematics	Mathematical Analysis, Advanced Algebra, Principles of Probability, Mathematical Statistics, Data Structure
		Information and Computer Science	
		Information Management and Information Systems	
School of Physics and Optoelectronics Technology	Physics	Applied Physics	Basic physics, Quantum mechanics, Electricity dynamics, Thermodynamics and Statistical Physics, Circuit and Analog Electronic Technology, Digital Electronic Technology, Solid State Physics, Computational Physics, Mathematical Physics Equation, Semiconductor Physics and Devices, Optics, Optoelectronics, Fundamentals of Information theory, Signal and System, Digital Signal Processing, Principles of Communications, Digital Electronic Technology, Data Structure
		Optical Information Science and Technology	





Schools	Divisions	Programs/ Majors	Core Curriculum
School of Business Administration	Business Administration	Business Administration	Micro-Economics, Macro-Economics, Principles of Management, Accounting, Principles of Marketing, Organization Behavior, Human Resource Management, Financial Management, Statistics for Management, Operations Research, Basic Accounting, Intermediate Financial Accounting, Advanced Financial Accounting, Cost Accounting, Management Accounting, Auditing, Accounting, Information System, International Accounting
		Human Resources and Management	
		Marketing Management	
		Financial Management	
	Accounting	Accounting	
	Business Administration (English Medium)	Business Administration (English Medium)	
School of Public Administration	Administrative Management	Administrative Management	Principles of Management, Principles of Political Science, Economics, Sociology, Public Administration, Administrative Law and Administrative Procedure Law, Public Policy Analysis, Public Human Resource Management, Public Crisis Management, The Network Social Governance, Leadership Science, Civil Service System, The Administrative Document Writing, Management Information Systems, Operations Research, Statistics, Principles of Social Investigation and Data Analysis
School of Foreign Languages	Business English	Business English	Basic English, Advanced English, Translation Theory and Skills, Interpretation, Selected Readings in British Literature, Selected Readings in American Literature, English Listening Comprehension, English Reading, English Writing, English Speaking, Basic Japanese, Advanced Japanese, Chinese-Japanese Translation, Chinese-Japanese Interpretation, Selected Readings of Japanese Literature, Japanese Reading, Japanese Listening Comprehension, Japanese Writing, Japanese Speaking
	Japanese	Japanese	
School of Physical Education	Sports Training (Please confirm the specific majors with us)	Sports Training (Please confirm the specific majors with us)	Sports Anatomy, Athletic Physiology, Athletic Training, Athletic Psychology, Sport Biomechanics, Sports Medicine, Sports Scientific Research Methods, Special Teaching Theory and Practice of Training, General Teaching Theory and Practice of Training

# UNIVERSITY TOWN CAMPUS

Schools	Divisions	Programs/ Majors	Core Curriculum	
School of Computer Science and Engineering	Computer Science	Computer Science and Technology	Advanced Language Program Design (C++), Data structure, Introduction to Computer Science, Database, Digital Logic, Discrete Mathematics	
		Network Engineering		
Information Security				
Computer Science and Technology (English Medium)	Computer Science and Technology (English Medium)			
School of Software Engineering	Software Engineering	Software Engineering	Introduction to Computer and Software Engineering, Discrete Mathematics, Digital Logic, Data Structure and Algorithm, Operating System, Compiling Technology, Computer Network, Database System, Software Architecture, Software Testing and Maintenance	
School of Environment and Energy	Environmental Science and Engineering	Environmental Engineering	Fundamentals of Computer, College Physics, College Physical Experiment, Organic Chemistry, Visual Basic Program Design, Environmental Monitoring	
		Environmental Science and Engineering		
Environmental Engineering (English Medium)	Environmental Engineering (English Medium)			
School of Bioscience and Bioengineering	Biological Sciences	Bioengineering		Organic Chemistry, Biochemistry and Molecular Biology, Modern Biochemical Technology, Inorganic Chemistry, Analytical Chemistry
		Biopharmaceutics		
		Biotechnology		
School of Economics and Finance	Economics	Economics	Macroeconomics, Microeconomics, Technical Economics, Public Economics, Political Economics, Industry Economics, Finance, Finance Theory, Principles of Management, Financial Engineering, Marketing, Securities Investment Analysis, Central Banking, Commercial Bank Management, Financial Derivatives, Theory and Practice Principle of International Trade, International Finance, International Settlement, Statistics, Econometrics	
		Finance		
		International Economics and Trade		
International Economics and Trade (English Medium)	International Economics and Trade (English Medium)			
Department of Tourism Management	Tourism Management	Tourism Management		Tourism Management, Accounting Principle, Information Technology Exhibition Site, Tourist Electronic Map Technology, Exhibition Project Management, Strategic Management, Hotel Management, Tourism Planning, Exhibition Planning and Management, Tourism Landscape Design, Exhibition Engineering Management, Food and Beverage Operations and Management, Exhibition Innovation Theory and Practice, Human Resource Management
		Economics and Management of Convention and Exhibition		



Department of Electronic Business	Electronic Commerce	Electronic Commerce	Introduction to E-Commerce, Principle and Application of ERP, Consumer Behavior, Electronic Commerce Front, Project Management, the Internet Finance, Supply Chain Management, Fundamentals of Logistics, Logistics Distribution Theory and Application, Logistics Cost Management, Purchasing and Supply Management, International Logistics, the Logistics Information System Design, Distribution Center Design and Management, Intelligent Logistics System Design
		Logistics Engineering	
School of Journalism and Communication	Media Studies	Journalism Studies	Fundamentals of journalism, Network communication, Audiovisual Production, Principles of Advertising, Basic Photography, Basic Cinematography, Introduction to Mass Media, Introduction to Brand, Integrated Marketing Communication, Public Relations, Survey and Statistical Analysis, Brand Strategy Management
		Communication Studies	
		Advertising	
School of Law (School of Intellectual Property)	Law	Law	Introduction to Jurisprudence, Professional Ethics of Law, Legal Logic, Homology, Constitution, Generality of Criminal Law, Generality of Civil Law, Business Law, Economic Law, Intellectual Property Law
		Intellectual Property	
School of Arts	Musicology	Musicology	Solfeggio, Harmony, Musical Form and Works Analysis, Introduction to Music, History of Chinese Music, History of Western Music
	Dancing	Dancing	
	Music Performance	Music Performance	
School of Design	Industrial Design	Industrial Design	Design sketch, Chromatology, Introduction to Industrial Design, History of Industrial Design, Presentation Technology, Methodology for Product and Process Design, Industrial Design, Engineering Fundamentals, Basis of design, Introduction to design, History of design
	Environmental Design	Environmental Design	
	Product Design	Product Design	
	Costume Design	Costume Design	
School of International Education	Teaching Chinese to Speakers of Other Language	Teaching Chinese to Speakers of Other Language	Intermediate Chinese, Advanced Chinese, Chinese Speaking, Chinese Reading, Chinese Listening, Comprehension, Newspaper and Periodical Reading, Applied Writing, Academic Writing, Introduction to China, Introduction to Chinese Culture, Business Chinese, Overview of Chinese Culture



# INTERNATIONAL CAMPUS

Schools	Divisions	Programs/ Majors	Core Curriculum
School of Biomedical Sciences and Engineering	Biomedical Engineering (Bilingual)	Biomedical Engineering (Bilingual)	Inorganic Chemistry, Organic Chemistry, Physical Chemistry, Biochemistry, Cell Biology, Fundamental Bio-materials, Modern Testing Methods for Materials, Circuit and Electronic Technology

## ADMISSION REQUIREMENTS

(1) High school graduate with good record or equivalent certificate. Those who have not graduated from high school, submit a Pre-graduation Certificate, or a testimonial which shows your expected graduation time and present your original high school certification, transcripts, and their translations when you register;

(2) Language Requirements for Chinese Medium Programs (The language proficiency certificate must remain valid at the time of admission):  
 HSK Band 4 with 180 scores or above for Science, Engineering and Architecture studies;  
 HSK Band 5 with 180 scores or above for Liberal Arts, Economics, Management Studies, Arts & Design and Sport Training.

(3) Language Requirements for English Medium Programs (The language proficiency certificate must remain valid at the time of admission).

For non-English speaking countries:

- TOEFL IBT 68 or above;
- IELTS 5.5 or above;
- Other equivalent English language qualifications. Applicants who seek exemption from submitting one of the above English Language competency certificates must show that they are a citizen or permanent resident of an English-speaking country; and have obtained their highest level of formal education from an institution where English is the medium of instruction and assessment and provide documented evidence of this when submitting their high school or college qualification certificate.

(4) Language Requirements for Bilingual Program (The language proficiency certificates must remain valid at the time of admission):

HSK Band 4 with 180 scores or above for Science or Engineering studies;  
 TOEFL IBT 68 or above; IELTS 5.5 or above; Other equivalent English language qualifications.

(5) Those who do not have an HSK certificate can study in the Chinese Language program at SCUT prior to their degree programs until the required certificate has been completed.

(6) The Foreigner Physical Examination Form should be filled in Chinese or English.

(7) To apply for music related programs, please submit a DVD or CD of your live performance. To apply for architecture related programs, please submit a portrait and a still life you have drawn. For design related programs, please submit two original designs.

(8) Applicants, who apply for Civil Engineering (Bilingual) or Materials Engineering (English medium) with conditional offers, should attend the math and English test held by professional schools. If the applicants cannot pass the test, you can transfer to other English medium programs or other universities.

(9) Applications for changing majors could be accepted within two weeks after the semester begins.



### Note:

**The above information is subject to changes with further notices.**



## APPLICATION DEADLINE

Before  
30 June each year

## STUDY STARTING TIME

September of each year

## APPLICATION PROCEDURE

Refer to the last page





# BACHELOR OF ARTS IN TEACHING CHINESE TO SPEAKERS OF OTHER LANGUAGE

## PROGRAM OVERVIEW

Chinese language courses include Basic Chinese, Intermediate Chinese, Advanced Chinese, Chinese Speaking, Chinese Reading, Chinese Listening, Newspaper Reading, Basic Writing, Dissertation Writing, Chinese Culture, IT Chinese, Scientific Chinese, and Intercultural Communication etc.

The Bachelor of Arts in Teaching Chinese to Speakers of Other Language is designed for students who wish to equip themselves with interdisciplinary talents in language communication using a thorough knowledge of the Chinese language and a deep understanding of the social and cultural aspects of China. Based on the distinguished record of teaching and research above Schools, the program offers 3 modules in International Relation, Chinese for Business and Trade, and Teaching Chinese to Speakers of Other Language.

In each program, students study Chinese for the first two years. Upon acquisition of a language foundation, students may then continue to the final two years for further systematic study.

## MAIN COURSES PROGRAM SPECIALITY

It offers major courses of MA in Journalism and Communication (International Dissemination of Chinese) as elective courses for those students who are intended to continue their master study in this field.

It has its own Public Diplomacy and Intercultural Communication Research Center.

It owns multiple entrepreneurship centers, such as Stem Cell Technology Corporation International Student Innovation and Entrepreneurship Center.

It provides alumni enterprise internship opportunities.

## GRADUATION & CAREER

The Bachelor of Arts in Teaching Chinese to Speakers of Other Language Degree requires the HSK Level 5 with scores above 180, the completion of a minimum of 160 credits, successfully defended a dissertation, and satisfactory academic performance. Eligible graduates may receive a Higher Education Certificate and a Bachelor's Degree from SCUT.

Graduates with Chinese-language and subject-oriented skills are highly sought after in the fields of international business and trade, tourism, hotel management, cultural communication, teaching Chinese, education, translation and interpretation, diplomacy, and foreign affairs.

## STUDY DURATION

4 Years

\* You can be allowed to start from the second academic year depending on your Chinese proficiency. Please refer to Entry Requirements for details.

## ADMISSION REQUIREMENTS

### (1) For 1st Year Entrance:

Applicants must have graduated from high school;  
Have a score of 180 or above on the New HSK Level 4.

### (2) Start from the 2nd Year:

Applicants must have graduated from high school;  
Have at least 1 year of university coursework (required to provide 1 year's university transcript);

Have a score of 180 or above on the New HSK Level 5.



## DEGREE PROGRAMS MODULES

### Chinese for Business and Trade

**(1) Course Aim:** This module provides students with the means to cultivate an excellent understanding of the social and cultural aspects of China and also equips them with applicable knowledge of the Chinese language to facilitate a better handling of business and trade, broadening their career paths in this modern international business market.

**(2) Course Structure:** Students in this module take Chinese language courses in Year 1 and Year 2 to achieve competent communication skills. In Year 3 and Year 4, students proceed to studies in business and trade for deeper specialization in international trade, business development of China, and Chinese business culture.

**(3) Curriculum:** Including, but not limited to Survey of Chinese International Trade, Chinese Economics and Geography, Applicable International Trade, English for Business and Trade, Negotiation in International Business, E-Business, Culture of Chinese Business and Trade, Lectures in Business, and Trade.

**(4) Practicum:** Language practice and various opportunities for field work in participating companies and organizations.

### Teaching Chinese to Speakers of Other Language

**(1) Course Aim:** This module provides students with the means to cultivate excellence in Chinese language skills, Chinese culture, and linguistics. Students master the theories and methodologies of language acquisition, which provides the competence necessary to teach Chinese as a foreign language.

**(2) Course Structure:** Students in this module take Chinese language courses in Year 1 and Year 2 to achieve competent communication skills. In Year 3 and Year 4, students proceed to studies in teaching Chinese as a foreign language to strengthen expertise in Chinese linguistics, literature, and culture. Students gain knowledge in the pedagogy and methodology of teaching Chinese as a foreign language.

**(3) Curriculum:** Modern Chinese, Classical Chinese, Chinese Literature, Outline of Chinese Culture, Differences between Chinese and Foreign Cultures, Outline of Teaching Chinese as a Foreign Language, Pedagogy of Teaching Chinese as a Foreign Language.

**(4) Practicum:** Internship on language teaching.

### International Relation

**(1) Course Aim:** This module provides students with the means to cultivate an excellent understanding of world politics and economics, international relation, sociology, intercultural communication, and foreign management and equips them with applicable knowledge of foreign public affairs, transnational business, international issue analysis and reporting.

**(2) Course Structure:** Students in this module take Chinese language courses in Year 1 and Year 2 to achieve competent communication skills. In Year 3 and Year 4, students proceed to studies in international relation for deeper specialization in foreign public affairs, transnational business, international issue analysis and reporting.

**(3) Curriculum:** Overview of Chinese National Conditions, The history of China diplomacy, Comparative Analysis of Electoral System, Intercultural Communication, Principles of Management, Principles of Politics Science, Organizational Behavior, Contemporary Chinese Business Negotiation.

**(4) Practicum:** Language practice, business internship, fieldwork in local governments and newspaper companies, and translation practicum.



**Please note that the modules, requirements, and other information are subject to the latest notices.**

# MASTER PROGRAM

## (2 or 3 Years)

The Academic Master's Degree is offered in 90 majors from 9 disciplines. The Academic Master's Degree of SCUT is established in accordance with a traditional discipline curriculum including Philosophy, Economics, Law, Education, Literature, Science Engineering and Administration.



## WUSHAN CAMPUS

Schools	Programs/ Majors
School of Mechanical and Automotive Engineering	Mechanical Engineering
	Material Science and Engineering
	Power Engineering and Engineering Thermophysics
	Safety Science and Engineering
School of Architecture	Architectural History and Theory
	Architectural Design and Theory
	Architectural Technology and Science
	Landscape Architectonics
	Urban and Rural Planning
School of Civil and Transportation Engineering	Mechanics
	Civil Engineering
	Highway and Railway Engineering
	Traffic Information Engineering and Control
	Transportation Planning and Management
	Shipping and Oceanic Engineering
School of Electronic and Information Engineering	Circuits and Systems
	Electromagnetic Filed and Microwave Technology
	Information and Communication Engineering (Chinese Medium, 3 Years; English Medium, 2 Years)
School of Electric Power	Power Engineering and Engineering Thermophysics (Engineering Thermophysics, Thermal Power Engineering)
	Electrical Engineering (Power System and its Automation, Power Electronics and Power Drives, Electric Machines and Electric Apparatus, Theory and New Technology of Electrical Engineering, High Voltage and Insulation Technology)
School of Automation Science and Engineering	Control Science and Engineering
	Electrical Computer and Engineering (English Medium, 2 Years)



Schools	Programs/ Majors
School of Material Science and Engineering	Chemistry (Polymer Chemistry and Physics)
	Biomedical Engineering
	Material Science and Engineering
School of Chemistry and Chemical Engineering	Chemistry (Inorganic Chemistry, Analytical Chemistry, Physical Chemistry, Organic Chemistry)
	Chemical Engineering and Technology (Chemical Engineering, Industrial Catalysis, Applied Chemistry, Chemical Technology, Energy Environmental Material and Technology)
School of Food Science and Engineering	Sugar Engineering
	Food Science and Engineering (Chinese Medium, 3 Years; English Medium, 2 Years)
School of Light Science and Engineering	Pulp and Paper Engineering
	Biomass Science and Engineering
School of Mathematics	Fundamental Mathematics
	Computational Mathematics
	Probability and Mathematical Statistics
	Applied Mathematics
	Operational Research and Cybernetics
School of Physics and Optoelectronics Technology	Theoretical Physics
	Condensed Matter Physics
	Optics
	Acoustics
	Physical Electronics
School of Business Administration	Management Science and Engineering
	Accounting
	Corporate Management
	Technological Economics and Management
School of Marxism Theory	Marxism Theory
School of Business Administration- MBA center	MBA (English Medium, 2 Years)
School of Foreign Languages	Foreign Language and Literature
School of Public Administration	Administrative Management (Administrative Management, Educational Economics and Management, Social Security, Land Resource Management ) (Chinese Medium, 3 Years; English Medium, 1.5 Years)
School of Physical Education	Physical Education

# UNIVERSITY TOWN CAMPUS

Schools	Programs/ Majors
School of Computer Science and Engineering	Computer Science and Technology
School of Software Engineering	Software Engineering (Chinese Medium, 3 Years; English Medium, 2 Years)
School of Environmental and Energy	Environmental Science and Engineering
School of Bioscience and Bioengineering	Biology
	Fermentation Engineering
School of Economics and Finance	Regional Economics
	Finance
	Industrial Economics
	International Trade
	Quantitative Economics
Department of Tourism Management	Tourism Management
Department of Electronic Business	Management Science and Engineering
School of Journalism and Communication	Journalism and Communication (Chinese Teaching and Communication)
School of Law (School of Intellectual Property)	Legal Theory
	Constitution Law and Administrative Law
	Criminal Jurisprudence
	Civil Law and Commercial Law
	Science of procedure Law
	Science of Economic Law
	International Public Law
	Intellectual Property
School of Arts	Music and Dance
School of Design	Design Studies (Master in Engineering)
	Design Studies (Master in Arts)
School of Medicine	Biology (Cell Biology)
	Biomedical Engineering (Biomedical Materials, Tissue Engineering, Nanomedicine and Medical Imaging)

## Guangzhou International Campus

Schools	Programs/ Majors
School of Biomedical Sciences and Engineering	Biomedical Engineering
	Biology



## ADMISSION REQUIREMENTS

(1) Bachelor's degree diploma and transcripts with good record. Those who have not graduated from undergraduate program, submit a pre-graduation certificate, or a testimonial which shows your expected graduation time and present your original certification, transcripts, and translations when you register.

(2) Language requirements for Chinese Medium programs (language certificate must be valid for the latest 2 years):

- HSK Band 4 with 180 scores or above for Science or Engineering studies
- HSK Band 5 with 180 scores or above for Liberal Arts, Economics, Arts and Design or Management studies
- HSK Band 5 with 210 scores or above for Journalism and Communication (Chinese Teaching and Communication)

(3) Language requirements for English Medium programs (only for non-English speaking countries) (language certificate must be valid for the latest 2 years):

- TOEFL IBT 80 or above
- IELTS 6.0 or above

(4) Those students who are exempt from submitting an English Language Certificate must meet the following conditions:

- A citizen of an English-speaking country
- Obtained the highest-level degree of education from an institution operating in English and submitting a proof of English instruction

(5) Those who do not have a HSK certificate can study in the Chinese Language program at SCUT prior to their degree programs until the required certificate has been completed.

(6) To apply for music related programs, please submit a DVD or CD of your live performance. To apply for architecture related programs or design related programs, please submit at least two sketches and two color paintings.

(7) Two recommendation letters.

(8) A study or research plan written in Chinese/English (500 words minimum).

(9) Original copy of Foreigner Physical Examination Form (must be filled out in Chinese or English).

(10) For MBA program applicants, must meet one of the following conditions and pass the evaluation of MBA center:

- By the end of September, obtained at least 3 years of work experiences after the undergraduate degree
- By the end of September, obtained at least 2 years of work experiences after the postgraduate degree

(11) Applications of changing majors will not be accepted two weeks after semester begins.

## APPLICATION DEADLINE

Before 15 June each year

## STUDY STARTING TIME

September of each year



**Please note that names of the majors, the schools and other information are subject to the latest notices.**

# Ph.D PROGRAMS (4 Years)

## WUSHAN CAMPUS

Schools	Programs/ Majors
School of Mechanical and Automotive Engineering	Mechanical Engineering
	Material Science and Engineering (Metal Material and Process Engineering, Polymer Material and Process Engineering)
	Power Engineering and Engineering Thermophysics (Chemical Process Equipment)
School of Architecture	Architectural History and Theory
	Architectural Design and Theory
	Architectural Technology and Science
	Study of Urban and Rural Planning
	Landscape Architectonics
School of Civil and Transportation Engineering	Mechanics
	Geotechnical Engineering
	Structural Engineering
	Disaster Prevention and Reduction Engineering and Protective Engineering
	Bridge and Tunnel Engineering
	Highway and Railway Engineering
	Traffic Information Engineering and Control
	Transportation Planning and Management
Shipbuilding and Oceanography Engineering	
School of Electronic and Information Engineering	Circuits and Systems
	Microelectronic and Solid State Electronics
	Electromagnetic Field and Microwave Techniques
	Information and Communication Engineering (Chinese/ English Medium)
School of Electric Power	Power Engineering and Engineering Thermophysics (Engineering Thermophysics, Thermal Power Engineering)
	Electrical Engineering (Power System and its Automation, Power Electronics and Power Drives, Electric Machines and Electric Apparatus, Theory and New Technology of Electrical Engineering, High Voltage and Insulation Technology)



Schools	Programs/ Majors
School of Automation Science and Engineering	Control Science and Control Engineering (Chinese/ English Medium)
School of Material Science and Engineering	Chemistry (Chemistry and Physics of Polymers)
	Material Science and Engineering (Chinese/ English Medium)
	Biomedical Engineering
School of Chemistry and Chemical Engineering	Chemistry (Inorganic Chemistry, Analytical Chemistry, Physical Chemistry, Organic Chemistry)
	Chemical Engineering and Technology (Chemical Engineering, Industrial Catalysis, Applied Chemistry, Chemical Technology, Energy Environmental Material and Technology)
School of Food Science and Engineering	Sugar Engineering
	Food Science and Engineering (Chinese/English Medium)
School of Light Science and Engineering	Pulp and Paper Engineering
	Biomass Science and Engineering
School of Mathematics	Mathematics
School of Physics and Optoelectronics Technology	Physics
	Physical Electronics
School of Marxism Theory	Marxism theory
School of Business Administration	Management Science and Engineering
	Accounting
	Corporate Management
	Technological Economics and Management
School of Public Administration	Public Management





## UNIVERSITY TOWN CAMPUS

Schools	Programs/ Majors
School of Computer Science and Engineering	Computer Science and Technology
School of Software Engineering	Software Engineering
School of Environmental and Energy	Environmental Science and Engineering (Chinese/ Bilingual Medium)
School of Bioscience and Bioengineering	Biology
	Fermentation Engineering
School of Economics and Finance	Applied Economics
Department of Electronic Business	Management Science and Engineering
Department of Tourism Management	Tourism Management
School of Medicine	Biology (Cell Biology)
	Biomedical Engineering (Biomedical Materials, Tissue Engineering, Nanomedicine and Medical Imaging, Biomedical Electronics and Medical Information)

## Guangzhou International Campus

Schools	Programs/ Majors
School of Biomedical Sciences and Engineering	Biomedical Engineering



## ADMISSION REQUIREMENTS

(1) Master's degree diploma and transcripts with good record. Those who have not graduated from master program, submit a pre-graduation certificate, or a testimonial which shows your expected graduation time and present your original certification, transcripts, and translations when you register.

(2) Language requirements for Chinese Medium programs (language certificate must be valid for the latest 2 years):

- HSK Band 4 with 180 scores or above for Science or Engineering studies
- HSK Band 5 with 180 scores or above for Liberal Arts, Economics, or Management studies

(3) Language requirements for English Medium programs (only for non-English speaking countries) (language certificate must be valid for the latest 2 years):

- TOEFL IBT 80 or above
- IELTS 6.0 or above

(4) Language requirements for Bilingual Medium programs:

- HSK Band 4 with 180 scores or above
- TOEFL IBT 80/ IELTS 6.0 above (only for non-English speaking countries)

(5) Those students who are exempt from submitting an English Language Certificate must meet the following conditions:

- A citizen of an English-speaking country
- Obtained the highest-level degree of education from an institution operating in English and submitting a proof issued by the instruction

(6) Those who do not have an HSK certificate can study in the Chinese Language program at SCUT prior to their degree programs until the required certificate has been completed.

(7) To apply for architecture related programs or design related programs, please submit at least 1 character sketch and 1 still life sketch.

(8) Two recommendation letters from professors or associate professors.

(9) A pre-acceptance letter signed by SCUT professors or associate professors.

(10) A study or research plan written in Chinese/English (500 words minimum).

(11) Abstract(s) of graduation thesis(es) or published paper(s).

(12) Applications of changing majors will not be accepted two weeks after semester begins.

## APPLICATION DEADLINE

Before 15 June each year

## STUDY STARTING TIME

September of each year



**Please note that names of the majors, the schools and other information are subject to the latest notices.**





# ENGLISH-MEDIUM PROGRAMS





# UNDERGRADUATE PROGRAMS (4 YEARS)

## COMPUTER SCIENCE AND TECHNOLOGY

### PROGRAM OVERVIEW

International students undertaking this program will:

- Master the fundamental knowledge and theoretical principles underpinning computer science;
- Acquire knowledge and operating processes of core technologies and hardware; Be made familiar with the latest frontier knowledge and emerging technologies in computer science;
- Be trained to develop their research skills, and the creative and practical application of research;
- Adopt professional, entrepreneurial, and international perspectives in the application of their computer science skills and knowledge;
- Acquire, through theory and practice, cross-cultural literacy and, improved proficiency in English, and enhanced Chinese language skills.

### MAIN COURSES

The core courses are:

Calculus, Linear Algebra, Discrete Mathematics, Chinese Language, Chinese Culture, Data Structure, Database, Advanced Language Program Design (C++), Operating System, Principles of Compiling, Computer Network, Software Engineering, Artificial Intelligence.

### PROGRAM SPECIAL FEATURES

- It is been accredited as a National Brand Program and a Guangdong Province Brand Program.
- It has access to in-University Practicum Teaching Centers, including:
  - SCUT-Tencent Guangdong Engineering Practicum Teaching Center;
  - SCUT-Microsoft Guangdong Engineering Practicum Teaching Center;
  - SCUT-Samsung Guangdong Engineering Practicum Teaching Center;
- It offers entrepreneurship courses in IT Business.

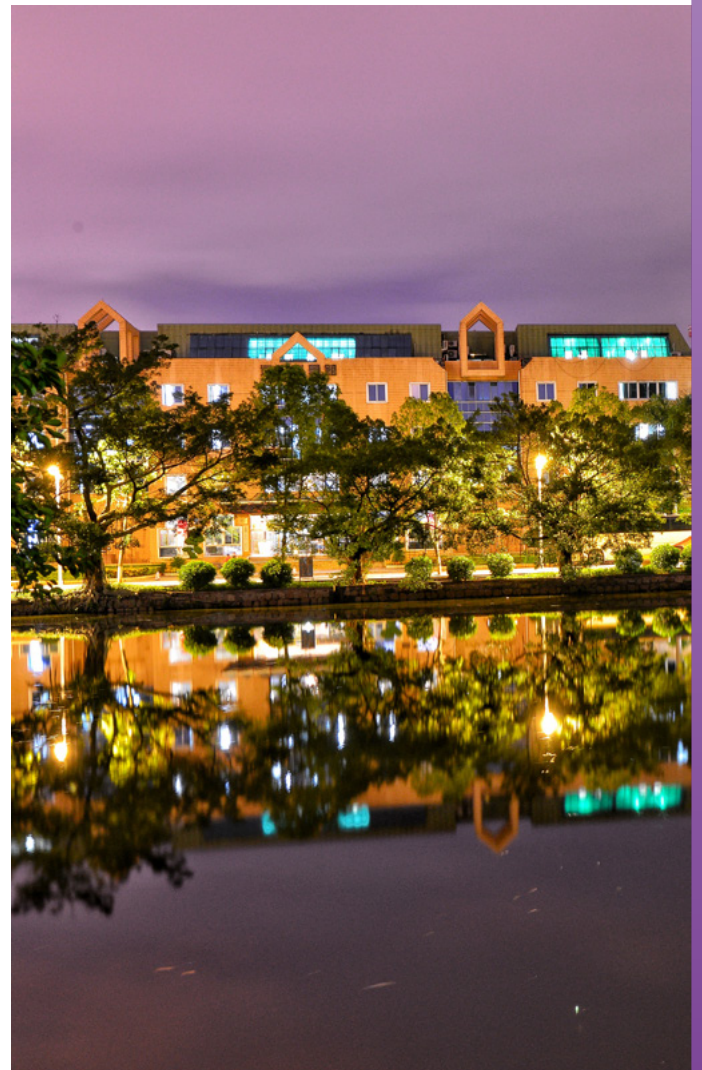
### DEGREE AWARDED

Bachelor's Degree of Engineering

### CAREER PROSPECTS

(1) Graduates will possess the capabilities needed to work in industrial organizations, research departments, and computer hardware/software development organizations, and governmental departments. They will also be equipped to contribute in the areas of computing research, engineering development, and other related fields.

(2) Employment Rate: 100%





## INTERNATIONAL ECONOMICS AND TRADE

### PROGRAM OVERVIEW

International students undertaking this program will:

- Develop a systematic command of basic theories and tools of economics and management science;
- Understand the basic rules and operations of international trade, including the principles of international trade bodies such as the WTO;
- Understand computer applications for trade analysis and management;
- Acquire, through theory and practice, cross-cultural literacy and, improved proficiency in English, and enhanced Chinese language skills.

### PROGRAM SPECIAL FEATURES

It has its own International Business Laboratory and an emphasis on an integration of Chinese and western economics theory and practice.

### MAIN COURSES

The core courses are: Microeconomics, Macroeconomics, Principles of Transnational Corporations Management, International Finance, Financial Management, Principles of Accounting, International Marketing, International Trade, Business Negotiation, Chinese Language, Chinese Culture.

### DEGREE AWARDED

Bachelor's Degree of Engineering

### CAREER PROSPECTS

Graduates are in high demand in fields of international business and economics, multinational enterprises, and governmental departments of economics, foreign trade companies, export-oriented enterprises, and securities traders.

## BUSINESS ADMINISTRATION

### PROGRAM OVERVIEW

International students undertaking this program will:

- Cultivates students with comprehensive development in morality, intelligence, and physique to meet the needs of social and economic development;
- Demonstrates subject matter knowledge of economics and management;
- Master theories and skills of business administration;
- Being senior specialized managers with a high level of foreign language and computer application ability.

### PROGRAM SPECIAL FEATURES

The Bachelor of Management in business administration program (BA, broad stream), rated as “Outstanding Undergraduate Program” by both national and provincial education authorities, gives students comprehensive knowledge to all basic aspects of business administration, equipping them with broad-based knowledge and expertise, broad horizon and whole-educated personality to become well-rounded business leaders as well as professional candidates who would further study for master's or PhD program.



## MAIN COURSES

---

Microeconomics, Macroeconomics, Management Principles, Accounting, Principles of Marketing, Organizational Behavior, Human Resource Management, Financial Management, Enterprise Strategic Management, Management Statistics, Operations research.

## DEGREE AWARDED

---

Bachelor's Degree of Engineering

## CAREER PROSPECTS

---

After graduation, students will be engaged in professional management functions at large or medium-sized state-owned enterprises, foreign-invested enterprises, private enterprises, and government departments, as well as continuing to study for a postgraduate degree.

# ENVIRONMENTAL ENGINEERING

## PROGRAM OVERVIEW

---

International students undertaking this program will:

- Receive a thorough grounding in theoretical engineering and the application of those broad principles to practical research-based projects and/or industry-based projects;
- Develop professional capabilities to participate in and contribute to engineering project teams;
- Have a broad appreciation of and be able to specialize in water treatment engineering, air pollution control engineering, solid waste disposal and recycling, and biological technology;
- Acquire, through theory and practice, cross-cultural literacy and, improved proficiency in English, and enhanced Chinese language skills.



## PROGRAM SPECIAL FEATURES

---

- It is accredited as a Guangdong Province Brand Program.
- It has its own Guangdong Provincial Environmental Engineering Experiment Teaching Demonstration Center.
- It offers entrepreneurship courses in Environmental Industry.

## MAIN COURSES

---

Fluid Mechanics and Heat Transfer, Environmental Toxicology, Air Pollution Control Engineering, Environmental Monitoring, Solid Waste Treatment and Disposal, Environmental Engineering Microbiology, Water Pollution Control Engineering, Environmental Entrepreneurship Education, Chinese language, Chinese Culture.

## DEGREE AWARDED

---

Bachelor's Degree of Engineering.

## CAREER PROSPECTS

---

(1) Graduates will be able to apply their knowledge to environmental management and protection globally. They will possess the capabilities needed to work in industrial and mining enterprises, academic research institutions environmental protection departments and other government sectors.

(2) Employment Rate: 100%



# CIVIL ENGINEERING

## PROGRAM OVERVIEW

students undertaking this program will:

- Receive a thorough grounding in theoretical civil engineering and the application of those broad principles to practical research-based projects and/or industry-based projects;
- Develop a creative/solutions-based approach to key civil engineering challenges;
- Gain insights into the practical application of theory and creativity to major civil engineering projects in the pearl river delta;
- Consolidate their multicultural communication, teamwork, and management skills in the project team;
- Acquire, through theory and practice, cross-cultural literacy and, improved proficiency in English, and enhanced Chinese language skills.

## PROGRAM SPECIAL FEATURES

The program is a national leader and has contributed to the economic development of south China, Hong Kong, Macau, and Southeast Asia.

- (1) It is geared to the standards of the international civil engineering industry.
- (2) It is accredited as a Guangdong Province Brand Program.
- (3) It has its own Guangdong Provincial Civil Engineering Experiment Teaching Demonstration Center.
- (4) It offers entrepreneurship courses in Civil Engineering Industry.

## MAIN COURSES

Fluid Mechanics and Heat Transfer, Environmental Toxicology, Air Pollution Control Engineering, Environmental Monitoring, Solid Waste Treatment and Disposal, Environmental Engineering Microbiology, Water Pollution Control Engineering, Environmental Entrepreneurship Education, Chinese language, Chinese Culture.

## DEGREE AWARDED

Bachelor's Degree of Engineering

## CAREER PROSPECTS

Graduates will be equipped to contribute in the areas of civil engineering structure design, construction management, quality monitoring, technical consulting, and infrastructure project planning.

Employment Rate: 98.1%

# MATERIALS SCIENCE

## PROGRAM OVERVIEW

International students undertaking this program will

- Be provided with a consolidating foundation in natural science, materials science, and engineering;
- Develop a sound grasp of the technologies of materials and devices design, manufacturing, and testing, both in traditional industries and innovative high-tech industries;
- Master the theory and technical skills in the application of materials, and establish a solid foundation for further study and higher degrees;
- Advance their professional practices attitudes and skills, underpinned by a deep knowledge of related scientific theories, an innovative perspective and competence, a capacity for independent research and problem-solving, and consolidate an international competitive advantage based on enterprising spirit, and global vision;
- Acquire, through theory and practice, cross-cultural literacy and, improved proficiency in English, and enhanced Chinese language skills.

## PROGRAM SPECIAL FEATURES

- (1) It is a well-designed teaching and training system that combines experience from world class universities and the excellence of education based on Chinese Characteristics.
- (2) It provides a deep and high-quality focus on innovation in material science that is based on the essential theories of relationship between micro structure and performance of materials.



## MAIN COURSES

Analytic Chemistry, Inorganic Chemistry, Organic Chemistry, Physical Chemistry, Structural Chemistry, Solid Physics, Thermodynamics and Statistical Physics, Materials Mechanics, Fundamentals of Materials Science, Physical Properties of Materials, Modern Methods for Materials Characterization and Analysis, Materials Calculation and Simulation, Materials Selection and Design, Fundamentals of Materials Processing.

## DEGREE AWARDED

Bachelor's Degree of Engineering

## CAREER PROSPECTS

(1) Graduates will possess the capabilities needed to work both in traditional industries and innovative high-tech industries. They will also be equipped to establish a solid foundation for further study and higher degrees.

(2) Employment Rate: 100%



# MICROELECTRONIC SCIENCE AND ENGINEERING

## PROGRAM OVERVIEW

International students undertaking this program will understand the following knowledge and achieve the abilities:

- Master solid professional basic knowledge, basic principle, method and means, and apply mathematics, natural science, the professional knowledge and professional knowledge to solve complex engineering problems.
- Enhance the ability of problem Analysis to identify, formulate and analyze complex microelectronic engineering problems, reaching to substantiated conclusions using basic principles of mathematics, science, the basic principle of this major, operating method, means and electronic industry knowledge.
- Advance their ability to design solutions for complex microelectronic engineering problems and innovatively electronic systems, components or process that meet specific needs with societal, public health, safety, legal, cultural and environmental considerations.
- Develop an ability to conduct investigations of complex microelectronic engineering problems based on scientific theories and adopting scientific methods including design of experiments, analysis and interpretation of data and synthesis of information to provide valid conclusions.

## PROGRAM SPECIAL FEATURES

All-English teaching is provided, as well as Multi-level of international jointed training, including 2+2 program, 3+2 program, 4+2 program, double master's degree, double doctor's degree, etc. The school cooperates with world-renowned microelectronics research institutions such as the university of Leuven and European Microelectronics Research Center (IMEC center) to enhance the international competitiveness and academic innovation ability of talents and to meet the needs of the new generation of information technology.



## MAIN COURSES

---

The core courses are:

Circuit, Analog Electronic Technology, Digital Electronic Technology, Signals and Systems, Microcomputer System and Interface, Digital Signal Processing, Communication Electronic Circuit, Electromagnetic Field and Wave, Semiconductor Physics, Semiconductor Device, IC Fabrication Technology, Principle and Design of Analog Integrated Circuit, Principle and Design of Digital Integrated Circuit

## DEGREE AWARDED

---

Bachelor's Degree of Engineering

## CAREER PROSPECTS

---

(1) Graduates will be advanced integrated circuit technical talents with all-round development of morality, intelligence, high social responsibility and comprehensive knowledge: basic knowledge, basic skills and basic qualities of scientific research in the field of microelectronic engineering. As compound qualified talents, they will be capable for international communication and competition in the field of integrated circuits engineering.

(2) Employment Rate: 100%

# BIOMEDICAL ENGINEERING

## PROGRAM OVERVIEW

---

International students undertaking this program will understand the following knowledge and achieve the abilities:

- **Engineering Knowledge:** An ability to apply knowledge of mathematics, science, engineering fundamentals and engineering specialization to the solution of complex engineering problems.
- **Problem Analysis:** An ability to identify, formulate and analyze complex engineering problems, reaching to substantiated conclusions using basic principles of mathematics, science, and engineering.
- **Design / Development Solutions:** An ability to design solutions for complex engineering problems and innovatively design systems, components or process that meet specific needs with societal, public health, safety, legal, cultural and environmental considerations.
- **Research:** An ability to conduct investigations of complex engineering problems based on scientific theories and adopting scientific methods including design of experiments, analysis and interpretation of data and synthesis of information to provide valid conclusions.
- **Project Management:** Demonstrate knowledge and understanding of engineering management principles and methods of economic decision-making, to function in multidisciplinary environment.

## PROGRAM SPECIAL FEATURES

---

Relying on the national and provincial high-level scientific research platform, the biomedical engineering program focuses on biomedical materials and aims to cultivate high-end research talents with innovative ability and scientific practical ability by closely tracking the frontiers of Biomedical Engineering discipline, promoting high-quality teaching with high-level scientific research.

## MAIN COURSES

---

The core courses are:

Inorganic Chemistry, Organic Chemistry, Physical Chemistry, Biochemistry, Cell Biology, Fundamental Biomaterials, Modern Testing Methods for Materials, Circuit and Electronic Technology, Industrial Design Engineering Foundation

## DEGREE AWARDED

---

Bachelor's Degree of Engineering

## CAREER PROSPECTS

---

Graduates will possess a solid and broad basic theory of natural science and professional knowledge of Chemistry, Biology, Materials Science and Engineering, with perfect multidisciplinary knowledge structure of Biomedical Engineering, with international competitiveness, innovative thinking, scientific research literacy and organizational leadership skills. The graduate will be able to pursue a career in scientific research, technology development and management in related fields of Biomedical Engineering.

(2) Employment Rate: 100%



# MASTER PROGRAMS

## INFORMATION AND COMMUNICATION ENGINEERING ( 2 YEARS)

### OBJECTIVES

This program aims at providing graduates of electronic and information engineering, electrical engineering, telecommunications engineering, computer science and other related disciplines an opportunity for further study at postgraduate level. Students will embark on a broad choice of core subjects in multimedia technologies, telecommunications and electronic engineering that enable them to meet new challenges and tap new opportunities in relevant fields. Students can also acquire the latest technical know-how by registering for specialized subjects in a chosen area that focuses on the cutting edge issues facing the engineering profession today. Students who have managerial responsibilities can take electives on business or management according to their interest and career needs.

### PROGRAM SPECIALITY

- (1) Key Discipline in SCUT
- (2) Group projects supported by a professional laboratory
- (3) Industrial experience and exchange programs
- (4) Distinguished alumni, such as TCL President Li Dongsheng

### CURRICULUM

	Course Title	Course Credit	Hours
Compulsory Courses	Signal and System	3.0	48
	Chinese Culture	2.0	32
	General Chinese	8.0	128
	Intercultural Communication	2.0	32
	Principles of Modern Communications	3.0	48
	Digital Signal Processing	3.0	48
	Embedded System Design	2.0	32
	Multi-antenna Signal Processing and MIMO Communications	2.0	32
	Information Hiding and Digital Investigation	2.0	32
	Computer Vision and Application	2.0	32
	Machine Learning for Speech Processing	2.0	32
	Machine Learning	2.0	32
Wearable Systems	2.0	32	

# ELECTRICAL AND COMPUTER ENGINEERING (2 YEARS)

## OBJECTIVES

The objective of this program is to equip graduates, who seek a career in the Electrical and Computer Engineering (ECE), with in-depth knowledge in signal processing and control techniques for the design and development of electrical and computer control systems, both from software and hardware aspects. Students who pass all examinations and dissertation will be awarded a Master Degree in Engineering from South China University of Technology.

## PROGRAM SPECIALITY

- (1) The first two-year English-medium master program in SCUT
- (2) Brand major for international students
- (3) First-class research environment
- (4) Joint training programs with multinational enterprises

## CURRICULUM

	Course Title	Course Credit	Hours
Compulsory Courses	General Chinese	2	32
	Chinese Culture	2	32
	Intercultural Communication	2	32
	Signal and Systems	3	48
	Instrumentation and Sensors	3	48
	Digital Signal Processing	3	48
	Embedded System Design	2	32
	Computer Control and Application	2	32
	Robotics and Automation	2	32
	Machine Vision and Intelligent Systems	2	32
Selective Courses	Practice in Embedded programming	1	16
	Practice in Machine Vision and Intelligent Systems	1	16
	Feedback Control System Design	1	16
	Practice in Digital System (Advanced Signal Processing)	1	16



# FOOD SCIENCE AND ENGINEERING (2 YEARS)

## OBJECTIVES

The program aims to cultivate quality specialists who are well-developed morally, intellectually, and physically. Students are required to have good characters and fine scholarship, rigorous learning spirits, and team spirit; be equipped with solid theoretical foundation, specialized knowledge, and experimental skills in Food Science; be well informed with the technological developing trends of this discipline; have strong abilities to undertake independent scientific research, design, and teaching assignment. Graduates are expected to be competent to engage in teaching, scientific research, manufacturing, and management jobs in the field of Food Science.

## PROGRAM SPECIALITY

- (1) Food Biotechnology
- (2) Food Biochemistry
- (3) Food Processing and Preservation
- (4) Food Engineering
- (5) Protein Chemistry and Nutrition
- (6) Lipid Chemistry and Engineering
- (7) Functional Carbohydrate
- (8) Marine Food Engineering
- (9) Food Safety and Control

## CURRICULUM

	Course Title	Course Credit	Hours
Basic Courses	Chinese Culture	2	32
	General Chinese	8	128
	Intercultural Communication	2	32
Compulsory Courses	Food Process Engineering	2	32
	Food Micro & Macro components	2	32
	Advanced Food Microbiology	2	32
	Food Innovation	2	32
	Research Methodology and Statistics	2	32
Elective Courses	Advanced Food Packaging	2	32
	Current Technology in Food Processing	2	32
	Confectionery Science and Technology	2	32
	Advances in Food Dehydration	2	32
	Modeling in food processing	2	32
	Physical Properties of Foods	2	32
	Chemistry and Technology of Food Lipid	3	48
	Chemistry and Technology of Food Carbohydrate	3	48
	Traditional Food Habits in Asia	2	32
	Advanced Sensory Evaluation	3	48



## SOFTWARE ENGINEERING (2 YEARS)

### OBJECTIVES

This program is designed to help students build a solid foundation of software engineering. Students can grasp professional knowledge about software engineering, including theory and method of software engineering, software engineering technology, software service engineering and domain software engineering. Students can develop abilities to engage in software engineering industry and undertake technical work independently. This program aims to cultivate top talents who are competent for teaching and studying software engineering theories and for developing software systems and other related works.

### PROGRAM SPECIALITY

- (1) Theory and Method of Software Engineering
- (2) Software Engineering Technology
- (3) Software Service Engineering
- (4) Domain Software Engineering

### CURRICULUM

	Course Title	Course Credit	Hours
Basic Courses	Chinese Culture	2	32
	General Chinese	8	128
	Dissertation and Academic Standards	2	32
	Intercultural Communication	2	32
Compulsory Courses	Deep Learning	2	32
	Internet of Things Systems and Applications	2	32
	Artificial Intelligence	3	48
	Information Search Techniques	2	32
Elective Courses	Large Data Processing	2	32
	Parallel and Distributed Computing	2	32
	Introduction of Computer and Software Engineering	2	32
	Data Mining and Data Warehouse	2	32
	Software Testing Technology	2	32
	Computer Networks	3	64
	Machine Learning	2	32





## MBA (2 YEARS)

### OBJECTIVES

---

The program will empower students to reach their full potential, develop their competence in enterprise management and adaptation to the market. The program fosters high level, practical and versatile management talents with international vision, extensive knowledge, entrepreneurial mindset and good communication skills who meet the needs of socialist market economy development and are well-received by industrial, commercial enterprises and departments of economic management.

### PROGRAM SPECIALITY

---

- (1) In 2012 and 2015, the MBA Program of SCUT passed the certification of AMBA.
- (2) In 2016, the Program was awarded China MBA Top 50.
- (3) In 2018, the Program was evaluated as A-class in the first China University Professional-degree Rankings (CUPR), ranking the top 7% - 15% in China.
- (4) In 2019, the School of Business Administration of SCUT won the international certification of AACSB.

## CURRICULUM

	Course Title	Course Credit	Hours
Basic Courses	Managerial Economics	2.5	40
	English	3	48
	Theory and Practice of Chinese Socialism	2	36
	Dialectics of Nature	1	18
Core Courses	Financial Accounting	2	32
	Financial Management	2	32
	Organizational Behavior	2	32
	Data, Models and Decision-Making	2	32
	Marketing Management	2	32
	Managerial Communication	2	32
	Human Resource Management	2	32
	Enterprise Strategic Management	2.5	40
	Operations Management	3	48
	Business Ethics	2	32
	Commercial Rules	2	32
	International Business Management	2	32
Elective Courses	Business Simulation	2	32
	Logistics and Supply Chain Management	2	32
	Cross-Cultural Communication and Management	1	16
	Capital Markets and Listing Plan	2	32
	Management Accounting	2	32
	Analysis of Corporate Financial	2	32
	Project Management	2	32
	Business Model Design and Innovation	1	16
	Innovation Management	1	16
	Corporate On-site Consultation and Diagnosis	2	32

The above course schedule is for reference only, the specific courses are subject to the year of 2021 training scheme.

# BELT & ROAD INTERNATIONAL MASTER OF PUBLIC ADMINISTRATION (B&R-IMPA, 1.5 YEARS)

## OBJECTIVES

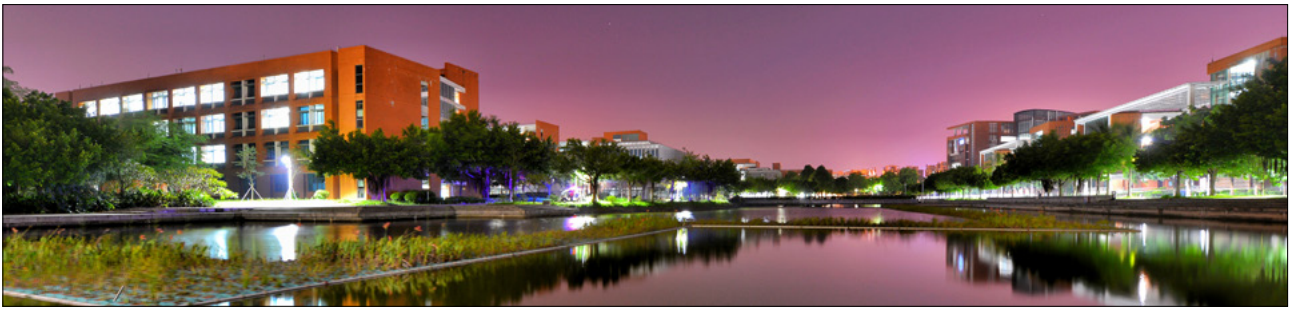
This program aims to improve cooperation and exchanges with developing countries along Belt and Road. Students can learn experiences and practices of modernization of Chinese governance system and develop abilities of public administration to promote friendly and sustainable development between home country and China. This program cultivates top talents in the area of public administration so as to meet the urgent needs of developing countries realizing their self-development and at the same time, to share China's experiences and practical strategies.

## PROGRAM SPECIALITY

This program innovates a training mode based on the characteristics of government officials of developing countries. It includes 1 year of course learning and half a year of dissertation. The maximum number of students in each class is 30. Each student is allocated to a responsible supervisor. Program courses focus on developing practical abilities to analyze and deal with complicated political, economic, and social issues. The program designs a multidisciplinary curriculum system and practical teaching, which is centered on the Belt and Road initiative. In the framework of comparative study, each course introduces and analyses the development background of China's Belt and Road, the governance experiences and the established system and facilities.







## CURRICULUM

	Course Title	Course Credit	Hours
Basic Courses	Chinese Cultural Behavior and Intercultural Communication	2	32
	Chinese	2	32
Compulsory Courses	Lectures on Public Administration Frontier and Practice	2	32
	Public Sector Strategic Management	2	32
	Chinese Government and Politics	2	32
	Public Policy Analysis	2	32
	Social Research Methods	2	32
Directional Elective Courses (choose 5)	Local Government Governance	2	32
	Public Economics	2	32
	Public Human Resource Management	2	32
	Government Management Innovation	2	32
	Monographic Study on Belt and Road	2	32
	Theory and Method of Public Decision	2	32
	Monographic Study on Labor Relations	2	32
	Urban Regional Development and Management	2	32
Basic Elective Courses (choose 1 or 2)	Special Topic on Contemporary Chinese Society	2	32
	Chinese Business Culture	2	32
	The Evolution and Development of Chinese Characters	2	32

# Ph.D PROGRAMS

## INFORMATION AND COMMUNICATION ENGINEERING (4 YEARS)

### OBJECTIVES

---

The processing of data and signals digitally together with the communication of such information over fixed and wireless links is of major importance in many aspects of modern engineering. This course will provide you with a good understanding of digital signal processing, radio systems and digital communications together with topics covering real time implementation of the signal processing techniques. The theoretical aspects of the course will be reinforced with extensive and hands-on exercises.

### MAIN RESEARCH FIELDS

---

- (1) Theory of Communication and Network Technology
- (2) Ultrasonic Detecting and Imaging
- (3) Image Processing and Video Processing
- (4) Theory and Technology of Signal and Information Processing

## CONTROL SCIENCE AND CONTROL ENGINEERING (4 YEARS)

### OBJECTIVES

---

This program is intended to train senior specialists who possess solid and extensive theoretical basis and systemic expertise on the major, and have in-depth knowledge about the development direction and the international research forefront of this subject, who are proficient in a foreign language, who master the advanced methods of scientific research, and could carry on creative research and practical work.

### MAIN RESEARCH FIELDS

---

- (1) Control system analysis and synthesis
- (2) Analysis and synthesis of delay and uncertainty control system
- (3) Networked control system theory and applications
- (4) Intelligent control theory and applications
- (5) Analysis and design of hybrid systems
- (6) Nonlinear control system
- (7) Control and optimization of switching system

## MATERIAL SCIENCE AND ENGINEERING (4 YEARS)

### OBJECTIVES

---

This program aims to cultivate high-level specialized personnel who have solid and broad theoretical basis and systematic, in-depth professional knowledge of materials processing; who are well-informed with the developing trends of material science and engineering and have a command of necessary experimental and computer skills; who have the abilities of conducting scientific researches or solve complex engineering problems independently; who are proficient in a foreign language and computer application skills; who

are able make creative achievements in the field of materials processing engineering Students are expected to become perfect personnel in related research institutions, institutions of higher learning or production departments with good moral character and humane accomplishment.

### MAIN RESEARCH FIELDS

---

- (1) Material Physics and Chemistry
- (2) Photoelectric Materials
- (3) Polymer Materials and Processing Engineering
- (4) Inorganic Non-metallic Materials
- (5) Metal Materials and Processing Engineering

## FOOD SCIENCE AND ENGINEERING (4 YEARS)

### OBJECTIVES

---

The program aims to cultivate high-level specialized personnel who are strong in the ideals of patriotism, observance of the law, and discipline; who exhibit moral, intellectual and physical characteristics; who are noble, have a rigorous style of study, strong dedication to career, and a healthy spirit of teamwork. Students are required to demonstrate a solid yet broad understanding of basic theories, combined with a systematically thorough academic awareness. The abilities necessary to independently undertake scientific research and make creative achievements in scientific and specialized technical fields will be demonstrable.

### MAIN RESEARCH FIELDS

---

- (1) Food Biotechnology
- (2) Food Engineering
- (3) Marine Food Engineering
- (4) Protein Chemistry and Nutrition
- (5) Functional Carbohydrates
- (6) Food Safety and Control

## ENVIRONMENTAL SCIENCE AND ENGINEERING (BILINGUAL, 4 YEARS)

### OBJECTIVES

---

This program helps students to build solid theoretical foundation, develop systematic specialized knowledge and technical skills. Students can be able to learn the studies and techniques of environmental science and engineering. This program aims to cultivate top talents who have innovative and global visions and have the abilities to engage in scientific, teaching and management works in this field.

### MAIN RESEARCH FIELDS

---

- (1) Water Environmental Science and Technology
- (2) Atmospheric Environmental Science and Pollution Control
- (3) Solid Waste Treatment and Recycling
- (4) Polluted Ecosystem Restoration Theory and Technology
- (5) Water Pollution Control Theory and Technology
- (6) The Ecological Environment



# NON-DEGREE PROGRAMS



## INTERNATIONAL FOUNDATION PROGRAM (Chinese or English Medium) (1 Year)

### PROGRAM OVERVIEW

---

The International Foundation Program offered by South China University of Technology is designed to prepare international students to operate in a university setting by familiarizing them with the requirements needed to succeed as an undergraduate student. The program is suited for those who do not meet the minimum requirements for direct entry into SCUT's undergraduate programs.

All courses are conducted in Chinese or English by SCUT lecturers and by experienced instructors. Students are accepted to undergraduate degree programs at SCUT if they successfully complete and pass the program. Upon successful completion of the program, a certificate recognized by other higher education institutions will be awarded.

## MAIN COURSES

- Chinese-Medium: Mathematics, Physics, Comprehensive Chinese, IT Chinese, Specialty Chinese.
- English-Medium: Mathematics, Physics, English, Basic Chinese, Management, Introduction to Computer Science.

## TUITION

- Chinese-Medium: RMB 23,000 per academic year (spring/fall semester intake);
- English-Medium: RMB 18,000 per academic year (fall semester intake only).

## ADMISSION REQUIREMENTS

- (1) "O-Level" Certificate and results, or a letter from your current school which shows that you have successfully completed two years of high school.
- (2) English test results: Applicants from non-English speaking countries are required to submit a TOEFL score of 50 or IELTS 5.0, or other equivalent English language qualifications (within certain countries).
- (3) Chinese-medium program offers spring semester intake, which applicants are required to submit HSK 4 or above.

## GENERAL CHINESE PROGRAM

	Expected Result	Main Courses	Optional Courses
Basic	Students are expected to know basic phonetic and tones, and use about 3,000 words and 1,600 Chinese characters. At the end of the course, students should have a basic command in listening, speaking, reading, and writing which meets the needs of daily living and study.	Basic Chinese, Basic Listening, Speaking, and Reading, other optional courses	Chinese Characters, Cantonese, Scientific Chinese, Chinese Culture, Kong Fu, Calligraphy, HSK Preparation
Intermediate	Students will be able to use about 5,200 words and about 2,200 Chinese characters. At the end of the course students should have a good command in listening, speaking, reading, and writing, and can deal with undergraduate courses.	Intermediate Listening, Speaking, Reading, Basic Writing in Chinese, Business Chinese, Newspaper Reading, online News Reading;	
Advanced	Students will be able to use about 7,000 words and 4,000 Chinese characters. Students should be able to listen to Chinese radio programs, read Chinese newspapers, and deal with postgraduate study in Chinese. The language skills will enable students to be fully involved in social and work activities such as tourism and business.	Advanced Chinese, Advanced Listening, Speaking, Reading, Applied Chinese Writing, Grammar of Modern Chinese, Chinese Culture, Cantonese, Business Chinese, Modern Chinese Lexicon, Chinese Rhetoric, Literature Conspectus, Chinese movies, other optional courses	

## TUITION

One semester: RMB 8,500.  
One year: RMB 16,200.

## APPLICATION DEADLINE

Fall Semester: 30 June.  
Spring Semester: 31 December.

## ACTIVITIES

Inner city tours to historical sites.

## DURATION

Long-Term: 1 semester or 1 academic year (Each academic year has two semesters);  
Short-Term: 1-2 months (Applicants can choose an appropriate course level according to their Chinese language proficiency).



# INTENSIVE CHINESE PROGRAM

## PROGRAM OVERVIEW

The Intensive Chinese Language Program is designed for the international students who need to improve their Chinese language proficiency in a short period of time. The program focuses on improving students' comprehensive Chinese knowledge and skills, including listening, speaking, reading, and writing. With the completion of this one-year program, students should have a good command of using Chinese language to conduct deeper communication and discussion, as well as achieving a greater proficiency of Chinese language than that of others to successfully engage in major studies.

## ELIGIBILITY

- (1) The Intensive Chinese Program is only applicable to the beginner; For those who have basic Chinese, please apply for General Chinese Program.
- (2) All applicants without HSK result who apply for degree program are required to attend this program prior to their degree studies.

## PROGRAM DURATION AND SEMESTERS

The Intensive Chinese Language Program is a one-year program, consists of two semesters. The Fall semester starts from early September while the Spring semester starts from the end of February. The exact dates subject to the admission notice.

## MAIN COURSES AND CURRICULUM

30 Teaching Hours per Week

### Compulsory:

Basic Comprehensive Chinese (Listening, Reading & Writing, Speaking; Improved Comprehensive Chinese (Listening, Conversation, etc.); Academic Chinese.

### Optional:

Basic/Intermediate Scientific Chinese; Basic / Intermediate IT Chinese; HSK Preparation; Chinese Movie Appreciation; Chinese Songs; Chinese Kong Fu or Calligraphy, etc.

## COURSE HIGHLIGHTS

- (1) Courses are intensive
- (2) Teaching speed is going fast
- (3) Proficiency of language is improving fast

## APPLICATION DEADLINE

Fall Semester: 30 June.  
Spring Semester: 31 December.

## TUITION

RMB 18,200 per year, RMB 10,000 per semester.





# INTERNATIONAL SUMMER CAMP PROGRAM WITH CREDITS

## PROGRAM OVERVIEW

SCUT has been organizing summer camp program in Chinese language and culture for over ten years. The summer camp program has been developed specifically with international students who are interested in learning or increasing their knowledge of Chinese language, culture, and history. Through a series of class teaching and activities, participants will be able to conduct usual communication by using Chinese or English language and gain with a greater understanding of China, its people and history. SCUT has provided the training classes for over thousand international students from all over the world.

## COURSES

### Courses I: Chinese Language and Culture (2 Credits)

Courses on entry and intermediate levels

- Chinese courses are mainly comprised of Chinese Comprehension, Conversation, and Reading; 12 hours per week
- Culture courses and activities include: Contemporary Chinese Economy, Chinese Culture, Chinese History and Geography, Chinese Calligraphy, Taiji and Chinese Kong-fu, etc; 4 hours per week
- 3-4 visits to the local companies and inner city tour

### Courses II: Innovation: China's Greater Bay Area

- 8 lectures in English or Chinese medium
- 8 hours per week Chinese language and culture exploration
- 3-4 visits to the local companies and inner city tour

The topics mainly include: Introduction of the latest development information and achievements of Guangdong, Hongkong, Macao & Greater Bay Area, Economy, E-commerce, Artificial Intelligence, Face Recognition System, Smart City, Modern Transportation, New Materials Application, etc.

## COURSE II HIGHLIGHTS

(1) Invite well-known scholars and professors to introduce the latest development achievement of the related major and field and learn about the latest technology and economic development trends.

(2) Comprehensively and deeply understand the development process of contemporary China, and feel the vitality and speed of GBA's economic and technological development.

- The actual lectures delivered are subject to change
- Group applications are welcome; Programs can be tailored to the specific students' interests.

## APPLICATION MATERIALS

The applicants must first apply on the website: [www.scut.edu.cn/apply](http://www.scut.edu.cn/apply), fill the application form and upload the scan copy of your passport (photo page).

## SCHEDULE

The International Summer Camp Program will last for 4 weeks, starting from 12th July to 8th Aug 2021.

## APPLICATION DEADLINE

30th June.

\* Exact dates are subject to Admission Notice.

## FEES

Tuition: RMB 3,500

Accommodation:

Double Room: RMB 27/day;

Four-bed Room: RMB 12/day

## COMPLETION

Upon completion of the program, the participants will be awarded a certificate.



# SCHOLARSHIP

## CHINESE GOVERNMENT SCHOLARSHIP FOR POSTGRADUATE STUDENTS

In order to increase the cooperation and understanding between the people of China and other countries, develop outstanding international talent, SCUT will provide about 70 scholarships for full-time postgraduate students under the Chinese government scholarship program.

### ELIGIBILITY

- (1) Applicant must be non-Chinese national and be in good health.
- (2) Education background and age limit:
  - Applicants studying to earn a Master's degree must have a Bachelor's degree and be under the age of 35.
  - Applicants studying to earn a Doctorate degree must have a Master's degree and be under the age of 40.

### DETAILS OF THE SCHOLARSHIP (FULL SCHOLARSHIP)

- (1) Full coverage on registration fee, tuition and accommodation fee.
- (2) Monthly Living allowance:
  - Master's degree students: RMB 3,000
  - Doctorate degree students: RMB 3,500
- (3) Comprehensive Medical Insurance for International Students in China.



Scholarship Program	Target Group	Supporting Categories	Coverage	Acceptance Agent	
Chinese government scholarship	Chinese University Scholarship	All Applicants	Degree-programs (Postgraduates)	Full/Partial	Admission Office of SIE, SCUT
	Silk Road Program	All Applicants	Degree-programs (Master's candidates)	Full/Partial	
	China-Africa Friendship Program	Applicants from Africa	Degree-programs (Postgraduates)	Full/Partial	
	YES-CHINA MBA for Development Countries	Applicants of 65 Countries	Degree-programs (Master's candidates)	Full	Chinese Embassy of 65 Development Countries;
	Bilateral Program	All Applicants	Degree-programs and Long-term Advanced Study (Bachelor's, Master's and Doctoral candidates)	Full	Dispatching; Authorities or Chinese Diplomatic Missions
	Sino-American Cultural Exchange Scholarship	American citizens	Degree-programs (Bachelor's Master's and Doctoral candidates)	Full	Admission Office of SIE, SCUT
	EU or American Credit Program	Applicants from EU or American Universities Signed MOU with SCUT	Long-term Advanced Study (Bachelor's, Master's and Doctoral candidates)	Full/Partial	Admission Office of SIE, SCUT

## IMPORTANT DATES

- (1) Application Date: Each year October 1 to the following year March 31
- (2) First-round candidates will be published on the website: [www.scut.edu.cn/sie/english](http://www.scut.edu.cn/sie/english) in late May
- (3) Final awarded applicants will be shortlisted and published on the website: [www.scut.edu.cn/sie/english](http://www.scut.edu.cn/sie/english) in late July
- (4) The Admission Office will deliver Admission Letter and Visa Application Form (JW201) to final awarded applicants in early August
- (5) Program Start Date: early September each year

## APPLICATION PROCEDURES

**Step 1:** Apply at: <http://www.csc.edu.cn/Laihua/>

\*Agency No: 10561 Type Category: B

Download and print out <APPLICATION FORM FOR CHINESEGOVERNMENT SCHOLARSHIP> (pdf)

**Step 2:** Apply at: <http://scut.edu.cn/apply>

Upload and submit <APPLICATION FORM FOR CHINESEGOVERNMENT SCHOLARSHIP> (pdf) on the system.

All the master's or doctoral applicants must contact supervisors from their major schools of SCUT via mail or interview.

- The applicants, who pass the assessment by supervisors, please ask the supervisors to sign a pre-acceptance letters.
- Regarding how to contact the supervisor, please find the formation via:

(1) <https://yanzhao.scut.edu.cn/open/TutorList.aspx> (Chinese Version)

(2) [http://www2.scut.edu.cn/sie\\_en/1197/list.htm](http://www2.scut.edu.cn/sie_en/1197/list.htm) (English Version)



**Step 3:** Download and follow <The SCUT- Chinese Government Scholarship Application Checklist> to prepare your application materials. Applicants are required to print out this Checklist and deliver your paper documents along with the Checklist to the Admission Office of School of International Education, SCUT.

Download Address: <http://www2.scut.edu.cn/siecn/2015/1201/c5042a78723/page.htm>

**The Delivery Address: Admissions Office, School of International Education, SCUT, Room 212, B1 Building, South China University of Technology, University Town Campus, Panyu District, Guangzhou. Postcode:510006. Tel: 86-20-39381048 or 39382002.**



## APPLICATION MATERIALS

(1) <The SCUT- Chinese Government Scholarship Application Checklist>

(2) <APPLICATION FORM FOR CHINESE GOVERNMENT SCHOLARSHIP>

(3) <SCUT APPLICATION FORM FOR FOREIGN STUDENTS>

(4) Front page of passport (passport should be valid for at least 1 year from the date of application)

(5) Visa page (applicants currently in China are required to provide)

(6) Notarized highest diploma or certificate of expected graduation (photocopy and translation copy)

(7) Notarized official transcripts (photocopy and translation copy)

(8) A study or research plan in Chinese/English (500 words minimum)

(9) Two recommendation letters (doctoral applicants are required to provide 2 recommendation letters from professors or associate professors)

(10) A pre-acceptance letter signed by SCUT professors or associate professors

(11) Doctoral applicants are required to submit abstract(s) or graduation thesis(es) or published paper(s).

(12) To apply for music related programs, please submit a DVD or CD of your live performance. To apply for architecture related programs or design related programs, please submit at least two sketches and two colour paintings.

(13) Original copy of Foreigner Physical Examination Form (written in Chinese/English, the form should be valid for at least 1 year from the date of application)

(14) Valid language certificate

Language requirements for Chinese-Medium Programs:

- HSK Band 4 with 180 scores or above for Science or Engineering studies
- HSK Band 5 with 180 scores or above for Liberal Arts, Economics, or Management studies

Language requirements for English-Medium Programs

(only for non-English speaking countries):

- TOEFL IBT 80 or above;
- IELTS 6.0 above or above.

\* Applications from English speaking countries:

A certificate of English as medium of instruction issued by graduated universities.

### NOTES:

**\*All documents mentioned should be in either Chinese or English.**

**\*Highest certificate/pre-graduation certificate and transcripts must be notarized. Translation copies of non-English highest certificate/pre-graduation and transcripts must be notarized.**

**\*All documents must be true and legal.**

**\*All information is subject to the latest notices from CSC and SCUT.**

**For more information, please visit the website of the School of International Education: <http://www.scut.edu.cn/sie/>**

# GUANGDONG PROVINCIAL GOVERNMENT OUTSTANDING INTERNATIONAL STUDENT SCHOLARSHIP

In an effort to encourage increasing numbers of outstanding international students to study in Guangdong, the Guangdong Government has established the Guangdong Provincial Government Outstanding International Student Scholarship to promote the development of Guangdong Higher Education Management of international students and to advance international influence to Guangdong Higher Education.

The scholarship is awarded to full time international students with excellent performance. SCUT will provide benefit to early scholarship applicants.

## ELIGIBILITY

1. Applicants must be non-Chinese nationals and be in good health;
2. Education background and age limit:
  - Applicants studying to earn a Master's degree must have a Bachelor's degree and be under the age of 35;
  - Applicants studying to earn a Doctorate degree must have a Master's degree and be under the age of 40.

## IMPORTANT DATES

- (1) Application Deadline: 15 June.
- (2) During April-June, the admission office will have two round scholarship examination, successful applicants will be shortlisted and informed.
- (3) Before August, the admission office will send the Admission Letter and Visa Application Form (JW202) to successful applicants.
- (4) Start of Classes: September 1 (To be confirmed)

## STANDARD OF THE SCHOLARSHIP

PhD Student: RMB 30,000

Master Student: RMB 20,000

Undergraduate Student: RMB 10,000

## APPLICATION MATERIALS

Apply at: <http://www.scut.edu.cn/apply>,

Filing the application form and uploading the following documents:

- (1) The front page of passport (passport should be valid for at least 1 year from the date of application), visa page (applicants currently in China are required to provide);
- (2) Highest diploma or pre-graduation certificate (notarized photocopy);
- (3) Official transcripts (notarized photocopy);
- (4) A study or research plan in Chinese or in English (no less than 500 words);
- (5) Two recommendation letters (Ph.D needs 2 recommendation letters from professors or associate professors) ;
- (6) One cassette recording for those applying to music programs. Art Portfolio is required for those applying to architecture, fine arts and design programs.
- (7) Foreigner Physical Examination Form.

## NOTES:

\* All documents mentioned should be in either Chinese or English.

\* Translations of certificate and transcripts must be notarized.





# International Chinese Language Teachers Scholarship

SCUT, appointed by Center for Language Education and Cooperation to host International Chinese Language Teachers Scholarship for Four-week program, One-semester Program, One-year Program and Bachelor's Degree in Teaching Chinese to Speakers of Other Language Program. With competitive course settings, diversified extra-curriculum activities and good teaching effect, SCUT has gained great appraisal by Center for Language Education and Cooperation and students who studied at SCUT.

## ELIGIBILITY

- (1) Applicants must be non-Chinese citizens, in good Physical and mental condition, well performed both academically and behaviorally. Aspired to take future careers on the teaching or international promotion of Chinese language.
- (2) Between the ages of 16-35 on September 1st, 2021. Applicants currently worked as Chinese language teachers shall not exceed the age limit of 45, while undergraduate students shall not exceed the age limit of 25.

## SCHOLARSHIP TYPES AND QUALIFICATIONS

### 1. Scholarship for Bachelor's Degree in Teaching Chinese to Speakers of Other Language

Commences September 2021 and provides scholarship for maximum four academic years. Applicants must have graduated with a high school diploma, and have a minimum score of 210 in HSK Test (Level 4) as well as 60 in HSKK test (Intermediate Level).

### 2. Scholarship for One Academic-Year Study

This category provides a scholarship for 11 months. Applicants must not be in china at the time of applying. Enrollment starts in September 2021. Applicants must have a minimum score of 210 in HSK Test (Level 3) and possess HSKK result.

### 3. Scholarship for One-Semester Study

Enrollment starts in September 2021 or March 2022. This category provides a scholarship for 5 months. Applicants who already have X1 or X2 visa will be refused. Applicants must have a minimum score of 180 in HSK Test (Level 3) and possess HSKK result.

### 4. Scholarship for Four-week Study

Enrollment starts in July 2021 or December 2021. This category provides a scholarship for 4 weeks. Applicants who already have X1 or X2 visa will be refused. Applicants must possess HSK result, and must apply in group through Center for Language Education and Cooperation. A group can only have between 10-15 applicants.

## COVERAGE AND CRITERIA

1. The International Chinese Language Teachers Scholarship provides full coverage on tuition fee, accommodation fee, living allowance (except four-week program students) and comprehensive medical insurance package.
2. Living allowance is granted on monthly basis. The allowance criteria per person is: Bachelor Students, One-Academic-Year Students, One-Semester Students: RMB 2,500 per month.





## APPLICATION PROCEDURE

---

1. For all applicants, please log on Center for Language Education and Cooperation website (<http://cis.chinese.cn>) to register. Complete the Scholarships Application Form online and upload the scanned copies of relevant supporting documents.

Application materials:

- (1) A scanned copy of the passport data page
- (2) HSK, HSKK score reports of no longer than two years
- (3) Recommendation letter signed by the head of the recommending Institutions
- (4) The Foreigner Physical Examination Form should be filled in Chinese or English
- (5) Degree scholarship program applicants need to provide notarized certification of the highest education diploma (or certificate of expected graduation), and official transcripts
- (6) Applicant who is currently working in a Chinese language teaching-related field shall provide an employment certification and reference letters from the agency
- (7) Applicants under the age of 18 shall submit notarized documents of entrusted legal guardians in China

2. Applicants must submit all other documents required by SCUT for application.

3. Recommending institutions reviews materials and recommends applicants who meet the criteria to our university.

4. Applicants log on SCUT International Student Service System ([www.scut.edu.cn/apply](http://www.scut.edu.cn/apply)) to register (no application fee). Fill out the personal information and upload the scanned copies of relevant supporting documents.

5. SCUT reviews materials, organizes online interviews, and issues the pre-admission on merit.

6. Center for Language Education and Cooperation reviews materials and announces the winners.

# SCUT INTERNATIONAL SCHOLARSHIP FOR EXCELLENCE

South China University of Technology (SCUT) offers the International Scholarship for Excellence to outstanding students who will matriculate into degree programs as full-time students. Selected students will receive a full or partial exemption from tuition for the normal duration of the degree. The level of benefits depends upon the applicant's academic excellence in previous academic achievements.

Item	Award Grade	Benefit
Bachelor' degree	First class honor	A full exemption from tuition for four years
	Second class honor	A half exemption from tuition for four years
	Third class honor	A half exemption from tuition for two years
Master's degree	First class honor	A full exemption from tuition for three years
	Second class honor	A half exemption from tuition for three years
	Third class honor	A half exemption from tuition for two years
Doctorate degree	Full scholarship	1.A full exemption from tuition for four years 2.Living allowance: RMB 1,400 per month (not including the Chinese study period) Note: Applicant, who has not yet passed the HSK test of required level, could apply for studying one-year Chinese program. The tuition of the Chinese study could be exempted.

## EVALUATION FOR RETENTION

Scholarship holders should attend the annual evaluation organized in each May. Those who are in good standing and have fulfilled the annual evaluation requirement can maintain the scholarship for the next academic year. Those who fail to reach the above requirements will be transferred to the status of self-funding students, but can attend the next evaluation to apply for the scholarship in the next academic year.

## ELIGIBILITY

- (1) Applicants must be non-Chinese citizen and be in good health.
- (2) Education background:
  - a. Applicants applying for a Bachelor's degree must have high school diploma.
  - b. Applicants applying for a Master's degree must have a Bachelor's degree.
  - c. Applicants applying for a Doctorate degree must have a Master's degree.



## IMPORTANT DATES

- (1) Application Deadline: 15 June
- (2) During April-June, the admission office will have two round scholarship examination, successful applicants will be shortlisted and informed.
- (3) Before August, the admission office will send the Admission Letter and Visa Application Form (JW202) to successful applicants.
- (4) Start of Classes: September 1 (To be confirmed)

## APPLICATION MATERIALS

Apply at <http://www.scut.edu.cn/apply>,  
filling in the application form online and uploading the following documents:

- (1) The front page of passport (passport should be valid for at least 1 year from the date of application), visa page (applicants currently in China are required to provide)
- (2) Highest diploma (original copy and notarized photocopy).
- (3) Official transcripts (notarized photocopy)
- (4) A study or research plan (Chinese or English, no less than 500 words).
- (5) Two recommendation letters (Ph.D needs 2 recommendation letters from professors or associate professors).
- (6) An pre-acceptance letter of supervisor issued by SCUT professors or associate professors (for postgraduate students)
- (7) The applicants of PhD have to submit Abstract(s) of Graduation Thesis(es) or Published Paper(s)
- (8) One cassette record for those applying for music programs. Art Portfolio is required for those applying to architecture, fine arts and design programs.
- (9) Foreigner Physical Examination Form.
- (10) Language Certificate

\*Language requirements for Chinese Medium Programs:

- HSK Band 4 with 180 scores or above for Science or Engineering studies;
- HSK Band 5 with 180 scores or above for Liberal Arts, Economics, or Management Studies.

\*Language requirements for English Medium Programs (only for non-English speaking countries):

- TOEFL IBT 68 or IELTS 5.5 or above. (For undergraduate students)
- TOEFL IBT 80 or IELTS 6.0 or above. (For postgraduate students)
- Applications from English speaking countries:  
A letter of English as medium of instruction issued by graduated universities or education institutes.

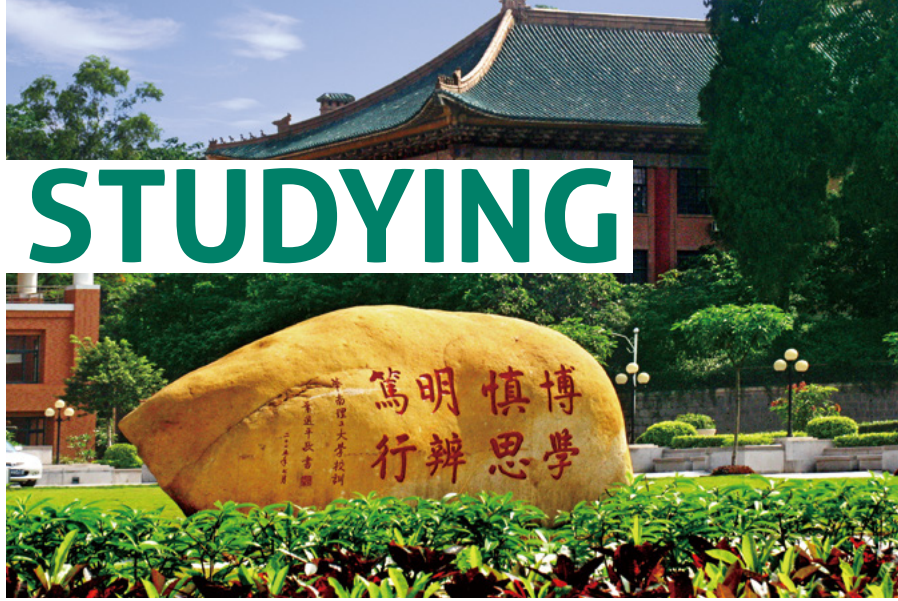
### NOTES:

- \*All documents mentioned should be in either Chinese or English.
- \*Translations of certificate and transcripts must be notarized.
- \*All documents must be true and legal.



# FEES FOR STUDYING AT SCUT

APPLICATION FEE: RMB 450



## TUITION

Items	Programs	Fees
Basic/ Intermediate/ Advanced Chinese Language Program	One Month (No less than 10 people)	RMB 2,560
	Two Months (No less than 10 people)	RMB 4,400
	One Semester (General Chinese)	RMB 8,500
	One Academic Year (General Chinese)	RMB 16,200
	One Semester (Intensive Chinese)	RMB 10,000
	One Academic Year (Intensive Chinese)	RMB 18,200
International Foundation Program	One Academic Year (Chinese Medium)	RMB 23,000
	One Academic Year (English Medium)	RMB 18,000
Undergraduate Program (One Academic Year)	Programs in Liberal Arts	RMB 18,200
	Bachelor of Arts in Teaching Chinese to Speakers of Other Language	RMB 18,200
	Programs in Economics & Administration	RMB 20,000
	Programs in Science & Technology, Foreign Languages, Sports	RMB 23,000
	Programs in Arts & Design	RMB 25,000
	Programs of English Medium & Bilingual Medium	RMB 26,000
Master Program (One Academic Year)	Programs in Liberal Arts	RMB 23,000
	Programs in Economics & Administration	RMB 25,000
	Programs in Science & Technology, Foreign Languages, Sports	RMB 28,000
	Programs in Arts & Design	RMB 28,000
	MBA (English-Medium)	RMB 44,500
	MPA (English-Medium)	RMB 33,500
	Programs of English medium	RMB 32,000
PH.D Program (One Academic Year)	Programs in Liberal Arts	RMB 34,000
	Programs in Economics & Administration	RMB 34,000
	Programs in Science & Technology	RMB 40,000

The tuition of general visiting students(bachelor/master students)stays the same with the tuition of corresponding bachelor/master programs.

The tuition of advanced visiting students(Ph.D students)stays the same with the tuition of corresponding doctoral program.

## ACCOMMODATION FEES

Items		Fees
Wushan Campus (Air-conditioned)	Accommodation Fee (From the beginning of Autumn semester to the end of Spring semester, 10 months in total)	Single: RMB 15,000 Double: RMB 9,800 Triple: RMB 8,000
	Accommodation Fee (During the Winter/ Summer Vacation)	Single: RMB 50/day Double: RMB 33/day Triple: RMB 27/day
	Accommodation Fee (Less than one month)	Single: RMB 90/day Double: RMB 50/day
University Town Campus (Air-conditioned)	Accommodation Fee (From the beginning of Autumn semester to the end of Spring semester, 10 months in total)	Double Room: RMB 8,000 Four-bed Room: RMB 3,500
	Accommodation Fee (During the Winter/ Summer Vacation)	Double Room: RMB 27/ day Four-bed Room: RMB 12/ day
All rooms are fully furnished and include individual bathrooms, internet access ports, telephones and air-conditioning. You will also have a fully fitted kitchen, coin-operated laundry facilities, and entertainment room and security service in the dormitory building.		

### NOTES:

- (1) The rule of accommodation reservation service is: First Come, First Served;
- (2) Students may choose to live off campus. Note that international students have to register at the local police station within 24 hours of moving into off-campus housing;
- (3) Students should pay the fees on time and in full in the registration time. It is suggested that students apply for one credit card in China's banks first and then pay by card. Usually, deferral application is unacceptable;
- (4) The Admission Letter will become invalid if the applicant is holding the expired visa in China;
- (5) SCUT can only provide the first two years' accommodation for self-support international students;
- (6) The tuition and accommodation fees are nonrefundable if a student withdraws from the program.

## LIVING EXPENSES

We estimate that a single student living in Guangzhou will need RMB 15,000-20,000 or living expenses annually in addition to the tuition and accommodation fees. This amount includes food, clothes, books and travels.

## INSURANCE

RMB 800/ year

## FOREIGNER PHYSICAL EXAMINATION

RMB 482 (The fee of health examination is free if you are degree student)

## APPLICATION FOR RESIDENT PERMIT

RMB 800 (12 months above)  
RMB 400 (less than 12 months)

## CAMPUS CARD

RMB 30 (free for degree students)

# UNIVERSITY FACILITIES

## LIBRARY FEATURES

---

- One of the top national university libraries of science and technology
- One of 13 National Foreign
- Teaching Material Centers for Chinese ministry of Education
- Total area of 67, 169 square meters
- Collection of 7, 270,000 volumes of literature
- Collection of 3, 600,000 volumes of digital literature
- Access to 164 key domestic and foreign network electronic databases
- Digital sources of both campuses can be shared
- Provide about 600 professional databases using "Dialog", an international searching system
- Inter-access to six key Guangzhou Shipai district university libraries
- Service center with information inquiry, digital, photography, typing and photocopy services
- Wireless service readily available in both libraries

## SPORTS FACILITIES

---

### Wushan Campus:

- 1 golf club
- 21 basketball courts
- 8 tennis courts
- 16 badminton courts, international standard
- 1 swimming pool
- 4 volleyball courts
- 2 gyms
- 1 ground track and field
- 50 ping-pong table
- 1 skating rink with an area of 800 square meter

### University Town Campus:

- 21 basketball courts
- 4 tennis courts
- 14 badminton courts, international standard
- 2 swimming pools
- 5 volleyball courts
- 2 gyms
- 1 kickboxing training field
- 2 ground track and fields

## STUDENT CANTEENS

---

### Wushan Campus:

There are four student canteens at the Wushan Campus that offer a great variety of food. Xihu Canteen northern area Canteen, No 6 Canteen, and the Muslim Canteen. A variety of restaurants are also near campus, such as McDonald's, KFC, etc. a group kitchen inside the residence enables students to cook their own meals. Students will find living and study items at the pleasant on-campus mini-markets.

### University Town Campus:

The University Town Campus has two student canteens, one of which offers Muslim food. Food can be purchased at the on-campus supermarket.

### International Campus:

There is one modern student canteen at the International Campus. There is also a FamilyMart supermarket nearby, offering coffee and different kinds of prepared food.

## IT FACILITIES

---

SCUT provides a wide range of it facilities including:

- University computer network email and internet access
- PC facilities and central servers
- Online learning capability
- Classroom presentation technology
- IT training and practice
- Digital technology loans
- Media production
- Video conference suites
- Language lab to assist students with any level of linguistic skills
- Computer room is in the international student dormitory



# APPLICATION PROCEDURE

## CHECKLIST

Documents	Chinese Language	International Foundation	Undergraduate	Program for General Visiting Students	Master	Ph.D	Program for Advance Visiting Students
Passport Copy (Valid duration covers your study period at SCUT)	✓	✓	✓	✓	✓	✓	✓
HSK Certificate (For Chinese Medium Programs only)		✓	✓	✓	✓	✓	✓
English Test Result (TOEFL/ IELTS or any other English Proficiency Certificate, For English Medium Programs only)		✓	✓	✓	✓	✓	✓
High School O'Level Certificate and Transcripts		✓					
High School Diploma and Transcripts			✓	✓			
Diploma and Transcripts of Previous Stage				✓			✓
Bachelor Diploma and Transcripts					✓		✓
Master Diploma and Transcripts						✓	✓
2 Recommendation Letters					✓	✓	✓
Personal Statement/ Study Plan/ Research Proposal					✓	✓	✓
Pre-acceptance Letter					✓	✓	✓
Foreigner Physical Examination Form	✓	✓	✓	✓	✓	✓	✓
Portrait or Still life drawn by yourself (Only for architecture related majors)			✓	✓	✓	✓	✓

Log on [www.scut.edu.cn/apply](http://www.scut.edu.cn/apply) and establish an account



Fill out the application's personal information, upload the scanned copy of supporting documents (Listed above) and pay the application fee online



**About 7-14 workdays to process**

If you are accepted, you will receive an electronic Admission Letter



**About 7 days for delivery**

Visa Application Form (JW202 Form) and Official Admission Letter



**About 45 days to process JW202 Form**

Apply for Study Visa at the Chinese Embassy



Report your arrival at SCUT

---

(1) Please upload the Required Documents in order to fulfill your application procedure. Each document has to be smaller than 1M.

(2) Certificates, diplomas and transcripts must be notarized copies. All of the documents should be translated into Chinese or English.

(3) Two weeks after the semester starts, the application for changing majors will not be accepted.

(4) If you have previously studied at any Chinese university, please upload the Visa page of your passport, prepare a transfer letter which includes your attendance record (should be above 80%) and transcripts.

(5) Students from some countries need to submit the "Non-criminal Check" notarized by Chinese embassy and personal resume, and the specific requirements will be notified by mail.

(6) For applicants under the age of 18, guardians of Chinese nationality are required when applying for academic degree programs or long-term education programs. The Guardian Letter must be notarized and the specific requirements will be notified by mail.

(7) Students from some countries are required to submit financial certificates, and the specific requirements will be notified by mail.









<http://en.scut.edu.cn/>

    [sieweb@scut.edu.cn](mailto:sieweb@scut.edu.cn) |  [studyatscut](#)

Tel: +86(0)20 39381048

+86(0)20 39381029

Fax: +86(0)20 39381058

E-mail: [sieinfo@scut.edu.cn](mailto:sieinfo@scut.edu.cn)



B1-205, School of International Education, South  
China University of Technology, University Town,  
Guangzhou, China, 510006

Apply Online: [www.scut.edu.cn/apply](http://www.scut.edu.cn/apply)

All right reserved and any unauthorized  
duplication will be prosecuted.

版权所有 翻版必究