



THE HONG KONG
POLYTECHNIC UNIVERSITY
香港理工大學

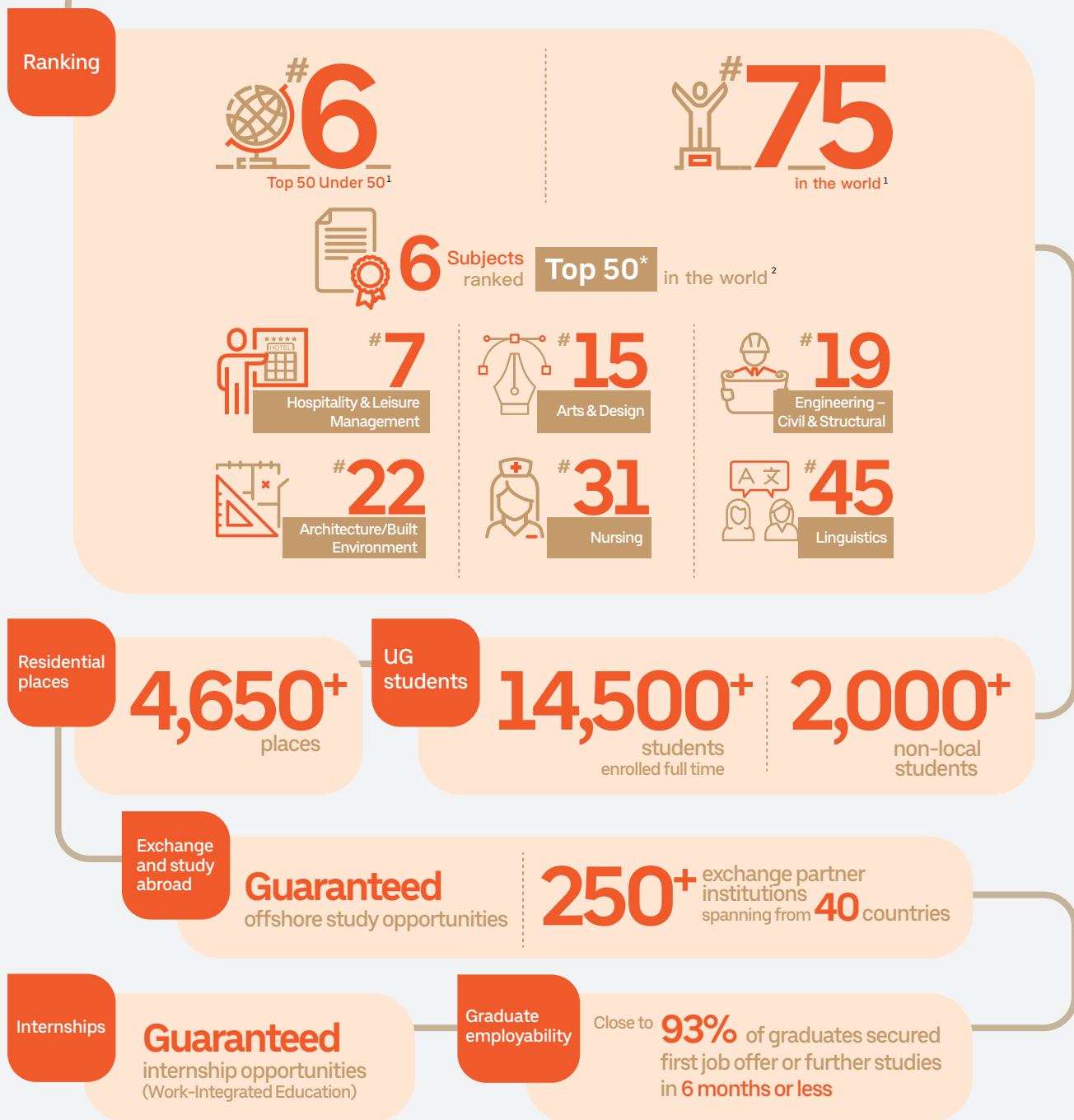
GLOBAL ENGAGEMENT OFFICE

JOIN OUR SWORLD SHAPE THE FUTURE

Undergraduate Study@PolyU

International Qualifications

Established in 1937, **The Hong Kong Polytechnic University** (PolyU) has the vision to excel in professional education, applied research and partnership for the betterment of Hong Kong, the nation and the world. With the motto **“To learn and to apply, for the benefit of mankind”**, PolyU takes pride in offering a wide range of quality programmes which nurture graduates who are critical thinkers, effective communicators, innovative problem solvers, lifelong learners and ethical leaders, as well as a long-established research culture which supports our academics in conducting research that has impact and practical value. PolyU is renowned for its spirit of determination and for providing students with global perspectives and opportunities in keeping with a vision of **“Opening Minds – Shaping the Future”**.



1 QS World University Rankings 2021
 2 QS World University Rankings by Subjects 2020

Opportunities at PolyU



Work-Integrated Education

Work-Integrated Education (WIE) is work-based learning experiences which take place in an organisational context relevant to a student's future profession, or the development of generic skills that will be valuable in that profession. PolyU has pioneered work-integrated programmes in the undergraduate curriculum.



Summer Research Abroad Sponsorship

The UG Summer Research Abroad Sponsorship (USRA) provides financial support for students to undertake research under the guidance and supervision of academics at leading overseas universities, paving the way for you to join the next generation of researchers and professionals.¹



Student Exchange Programme

PolyU has established a partnership network with universities and other academic institutions spanning 40+ countries and regions including the Chinese Mainland and Taiwan. Hundreds of our undergraduate students choose to study at one of our partner institutions for a semester, a summer term and/or a clinical placement.



Service-Learning

Service-Learning (SL) is where professional education meets societal needs. SL provides students with opportunities to serve the underprivileged, using their professional knowledge and skills in Hong Kong, the Chinese Mainland and overseas.



Global Learning Opportunities

PolyU encourages undergraduates to actively explore and engage in opportunities outside the university campus. These include summer programmes, conferences and competitions, short-term study tours and a variety of international activities. The university provides financial assistance to help you broaden your international perspective.



OxBridge Summer Programme

The elite OxBridge Summer Programme enables students to attend one of the summer courses hosted by the University of Cambridge or the University of Oxford, offering a combination of cosmopolitan interaction and study in unique academic surroundings. PolyU offers financial supports for high achieving students to gain international exposure.



Leadership Programme

PolyU's Leadership Programme offers credit-bearing courses with content ranging from corporate leadership to interpersonal development. Every year we welcome more than 2,000 students to embark on the journey of becoming future global leaders.

¹ Examples of university where undergraduate research programme have been carried out: Carnegie Mellon University, Massachusetts Institute of Technology, Purdue University etc.

Eligibility

General Admission Requirements

ACT/AP/SAT

A High School (Graduation) Diploma and the followings:

ACT: Composite score of 24 ; OR

SAT: 1190 in the SAT Reasoning Test

AND

AP : Grade 3 in 2 AP subjects ; OR

SAT: 600 in 2 SAT Subject Tests

GCE A-Levels / International A-level¹

Passes in 3 AL subjects / 2 AL and 2 AS subjects

IB¹

A minimum score of 24 with at least grade 4 in 2 Higher Level subjects

Others

Please refer to www.polyu.edu.hk/study for more details

English Language Requirements

TOEFL

Internet-based Test of 80 or above /
Paper-based Test of 550 or above

IELTS

Overall Band Score of 6 or above

SAT

Score of 590 or above in Evidence-based Reading and Writing

IB

Grade 4 or above in English

GCEOL / GCSE / IGCSE

Grade C / 4 or above in English

Others

Please refer to www.polyu.edu.hk/study on other English attainments that can waive our English Language Requirements²

PolyU Unique Offerings



Centrally

located Campus



First 2 years

University-managed accommodation



13 on-campus

cafeterias, canteens and restaurants



Nurtured

~1,000 entrepreneurs

and supported ~300 start-ups



Follow-on funding secured

HKD 430+ million

(2011-2019)

¹ Applicants with good results in these qualifications can be given credit transfer from 12 credits up to a maximum 25% upon admission to the 4-year degree curriculum.

² Individual cases will be considered on their own merits by the departments concerned. Applicants may be required to attend interviews or tests to further demonstrate their language proficiency.

Scholarships • School Fees and Expenses ¹

Entry Scholarships ²

Up to a maximum of

HKD 195,000 / USD 25,000 per annum



Fees and Living Costs

Tuition fee

HKD 145,000 / USD 18,600
per annum

Off-campus accommodation ⁴

HKD 48,000 / USD 6,100
per annum

University-managed accommodation ³
(excl. air conditioning, laundry)

HKD 13,000 / USD 1,700
per annum

Personal expenses ⁵

HKD 51,000 / USD 6,500
per annum

Total expenses

HKD 209,000 ~ HKD 244,000 /
USD 26,800 ~ USD 31,300
per annum

¹ All figures are based on Hong Kong Dollar with an approximate exchange rate at USD 1.00 = HKD 7.80.

² The maximum entry scholarship of HKD 195,000 is equivalent to full tuition fee HKD 145,000 waived plus HKD 50,000 living subsidy. It is renewable subject to academic attainment.

³ International students will normally be offered University-managed accommodation for the first 2 years of study. Conditions apply.

⁴ The off-campus accommodation cost may be adjusted according to the market rate and is based on a shared basis.

⁵ The amount may vary depending on your choice of lifestyle and other preferences.

Undergraduate Programme List 2021-22¹

Faculty of Applied Science and Textiles

BSc (Hons) in Applied Biology with Biotechnology
BSc (Hons) in Chemical Technology
BSc (Hons) in Food Safety and Technology
BSc (Hons) in Investment Science and Finance Analytics
BSc (Hons) in Engineering Physics
BA (Hons) Scheme in Fashion and Textiles with Specialism in

- Design
- Intimate Apparel and Activewear
- Knitwear Design and Technology
- Retail and Marketing
- Technology

Faculty of Business

BBA (Hons) in Accountancy
BBA (Hons) in Accounting and Finance
BBA (Hons) in Financial Services
BBA (Hons) in Supply Chain Management and Analytics
BBA (Hons) in International Shipping and Transport Logistics
BBA (Hons) in Management
BBA (Hons) in Marketing

Faculty of Construction and Environment

BSc (Hons) in Building Engineering and Management
BEng (Hons) in Building Services Engineering
BEng (Hons) in Civil Engineering
BEng (Hons) in Environmental Engineering and Sustainable Development
BSc (Hons) in Land Surveying and Geo-Informatics
BSc (Hons) in Property Management
BEng (Hons) in Structural and Fire Safety Engineering
BSc (Hons) in Surveying

School of Design

BA (Hons) Scheme in Design leading to one of the following awards:

- BA (Hons) in Advertising Design
- BA (Hons) in Communication Design
- BA (Hons) in Environment and Interior Design
- BA (Hons) in Product Design

Faculty of Engineering

BEng (Hons) in Aviation Engineering
BSc (Hons) in Biomedical Engineering
BSc (Hons) Scheme in Computing leading to one of the following awards:

- BSc (Hons) in Computing
- BSc (Hons) in Enterprise Information Systems
- BSc (Hons) in Financial Technology and Artificial Intelligence

BEng (Hons) in Electrical Engineering
BEng (Hons) in Transportation Systems Engineering
BEng (Hons) in Electronic and Information Engineering
BSc (Hons) in Internet and Multimedia Technologies
BSc (Hons) Scheme in Logistics and Enterprise Engineering leading to one of the following awards:

- BSc (Hons) in Logistics Engineering with Management
- BSc (Hons) in Enterprise Engineering with Management

BEng (Hons) Scheme in Mechanical Engineering leading to one of the following awards:

- BEng (Hons) in Mechanical Engineering
- BEng (Hons) in Product Analysis and Engineering Design

BEng (Hons) Scheme in Product and Industrial Engineering leading to one of the following awards:

- BEng (Hons) in Product Engineering with Marketing
- BEng (Hons) in Industrial and Systems Engineering

Faculty of Health and Social Sciences

BSc (Hons) in Medical Laboratory Science
BSc (Hons) in Mental Health Nursing²
BSc (Hons) in Nursing²
BSc (Hons) in Occupational Therapy
BSc (Hons) in Optometry²
BSc (Hons) in Physiotherapy
BSc (Hons) in Radiography
BA (Hons) in Social Policy and Social Entrepreneurship
BA (Hons) in Social Work

Faculty of Humanities

BA (Hons) in English and Applied Linguistics³
BA (Hons) in Linguistics and Translation

School of Hotel and Tourism Management

BSc (Hons) in Hotel Management
BSc (Hons) in Tourism and Events Management

¹ For the latest information of our programmes, please visit www.polyu.edu.hk/study.

² Programme duration is 5 years.

³ Subject to approval.

Application Essentials

01

Application Rounds

- Go to eAdmission portal www.polyu.edu.hk/admission
- Create account and fill in application form
- Upload supporting documents
- Settle application fee of HKD 450 / ~USD 57



02

PolyU Entry Scholarships

- Submit your application for scholarship via eAdmission portal
- Academic merits and interview performance will be considered
- The scholarship is renewable on the fulfillment of conditions



03

Offer Acceptance

- Settle the initial fee
- Join PolyU designated social media platform for Class of 2025



04

Visa Application

- Submit the hardcopy of visa application form and supporting documents by postal mail to PolyU



05

Accommodation

- Submit application for student halls of residence



06

Fulfillment of Offer Conditions

- Submit supporting documents for the fulfillment of offer conditions (conditional offers only)



07

Departure to Hong Kong

- Receive your student visa via courier
- Book your flight tickets
- Pack your belongings to Hong Kong



08

Arrival at PolyU

- Mass check-in at student halls of residence
- Attend programme registration in mid/late August
- Join orientation activities
- Semester begins on 30 August 2021

Important Dates

Early Round

25 November 2020

- Application after the early round will be considered on a rolling basis.

Main Round

25 February 2021

- PolyU accepts applications until 30 June 2021. Admission places will be subject to availability.

Student Sharing



Gasham Gorchubayli

Azerbaijan

Year 4 student studying BEng (Hons) in Industrial and Systems Engineering

While searching on the internet I found a university called PolyU, and after some time I decided to apply because of its alluring campus and high world ranking. I'm thrilled that I was admitted. I am looking forward to graduation because I have future plans in Hong Kong, such as getting a good job or starting a master's degree. I'm not sure yet. Let's let life take its course. One thing I am sure of is that I will stay in Hong Kong!



Karen Wen Wu

Dominican Republic

Year 4 student studying BBA (Hons) in Management

From a social perspective, PolyU's convenient location is unique. Not only can you get a taste of every culture close to campus, but you can also connect and learn from the different people you meet. Apart from making friends with a Chinese cultural background, you will find others from all over the world. Basically, being a student here makes networking a piece of cake.

Contact Us

Global Engagement Office

ST305, 3/F Ng Wing Hong Building
The Hong Kong Polytechnic University
Hung Hom, Kowloon
Hong Kong

international.study@polyu.edu.hk | +852 2766 5116

 www.polyu.edu.hk/geo

    [polyugeo](https://www.youtube.com/polyugeo)

 [Global Engagement Office](https://www.linkedin.com/company/global-engagement-office)



For more student's sharing